



FLOOR INSTALLATIONS







Floor installations

In this ever-changing society the range of connection possibilities required is increasing all the time.

These days, the keywords for offices are integrated systems, flexibility, connectivity and durability. Connecting services from within the floor satisfies all these requirements.

What is more, users are also interested in aesthetics: floor boxes are expected to blend in harmoniously with the interior.

For screeded floors, Vergokan offers a single universal floor box: the NEO. The adjustable height of this universal floor box can be matched to the height of the floor trunking used (28mm, 38mm or 48mm). The width in turn can be adjusted to floor trunkings that are 170mm, 250mm or 350mm wide. The use of pre-wired tubes is possible.

The Vergokan blanking and hinged covers have been designed to fit in with the contemporary, minimalist look in offices, museums, lobbies, shopping centres and modern homes.

The systems are suitable for any type of floor finish (carpet, tiles, vinyl, epoxy, polymer concrete, parquet, etc.).

The choice of subfloor depends on the following:

- Architectural requirements
- Organisational requirements
- Aesthetic requirements
- Safety requirements

The choice of cover depends on the floor finish:

- Carpet
- Linoleum
- Vinyl
- Parquet
- Tiles
- Epoxy
- Polymer concrete
- etc.

Reference

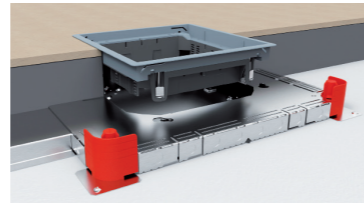
Project: Hôtel de Ville à Montigny-le-Tilleul

Architect: Bureau Vers plus de bien être V+ avec Bureau Bouwtechniek

Vergokan Products: **DVITWD3**, Tile-cassette square, water resistant

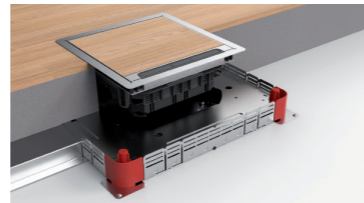
1. UNIFORM CONCRETE FLOOR SYSTEMS

VGI		
VGI28	Floor trunking with integrated ends	7
VGI38	Floor trunking with integrated ends	8
VGI48	Floor trunking with integrated ends	8
VGLI		
VGLI28	Floor trunking light integrated ends	9
VGLI38	Floor trunking light integrated ends	9
VGLI48	Floor trunking light integrated ends	10
UNIFORM FLOOR SYSTEM		
VSB	Rising / low elbow for floor trunking	10
VK	Joining piece for floor trunking	11
VE	End piece for floor trunking	11
NEO	Universal floorbox	12
VEVV	Form element	13
VERV	Form element round	13
VEVVS	Inner layer square form element	14
VERVS	Inner layer round form element	14
VEVP	Form element polished concrete	15
VERP	Form element round polished concrete	15



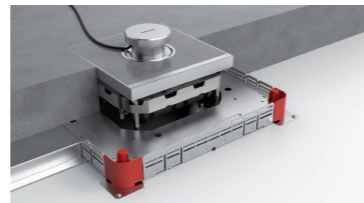
2. COVERS for CONCRETE FLOOR, not water resistant

CARPET LINOLEUM VINYL		
BDVKK2	Blind cover rectangular, universal	20
KDVKK2	Hinged cover rectangular, universal	21
BDVKK3	Blind cover square, universal	22
KDVKK3	Hinged cover square, universal	23
BDRKK3	Blind cover round, universal	24
KDRKK3	Hinged cover round, universal	25
PARQUET TILE EPOXY		
KDVIT2	Hinged cover rectangular, Stainl. steel	26
KDVIRK2	Hinged cover rectangular, with border	27
KDVIT3	Hinged cover square, stainless steel	28
KDVITV3	Hinged cover square flat stainless steel	29
KDVIRK3	Hinged cover square, with border	30
KDVIRKV3	Hinged cover square flat, with border	31
DRIT3	Cover round, lateral cable outlet	32



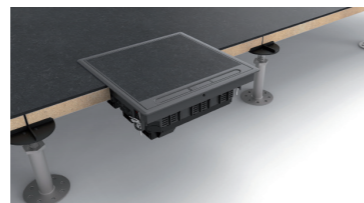
3. COVERS for CONCRETE FLOOR, water resistant

TILE EPOXY POLISHED CONCRETE		
BDVITWD2	Blind cover rectangular, water resistant	36
BDVITWD3	Blind cover square, water resistant	37
DVITWD3	Tile-cassette square, water resistant	38
DVITWDV3	Tile-cassette square flat water resistant	39
KDVITWD3	Hinged cover square, water resistant	40
KDVITWDV3	Hinged cover square flat water resistant	41
BDRITWD3	Blind cover round, water resistant	42
DRITWD3	Cover round, watertight cable outlet	43
KUWDT	Tube for water resistant cable exit	44



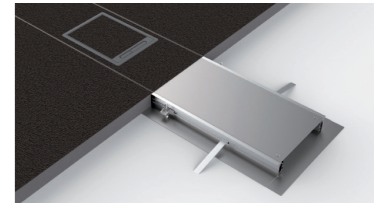
4. COVERS for RAISED FLOOR, not water resistant

CARPET LINOLEUM VINYL PARQUET		
BDVKK2	Blind cover rectangular, universal	48
KDVKK2	Hinged cover rectangular, universal	49
KDVIRK2	Hinged cover rectangular, with border	50
BDVKK3	Blind cover square, universal	51
KDVKK3	Hinged cover square, universal	52
KDVIRK3	Hinged cover square, with border	53
KDVIRKV3	Hinged cover square flat, with border	54
BDRKK3	Blind cover round, universal	55
KDRKK3	Hinged cover round, universal	56



5. FLUSH FLOOR TRUNKING SYSTEM

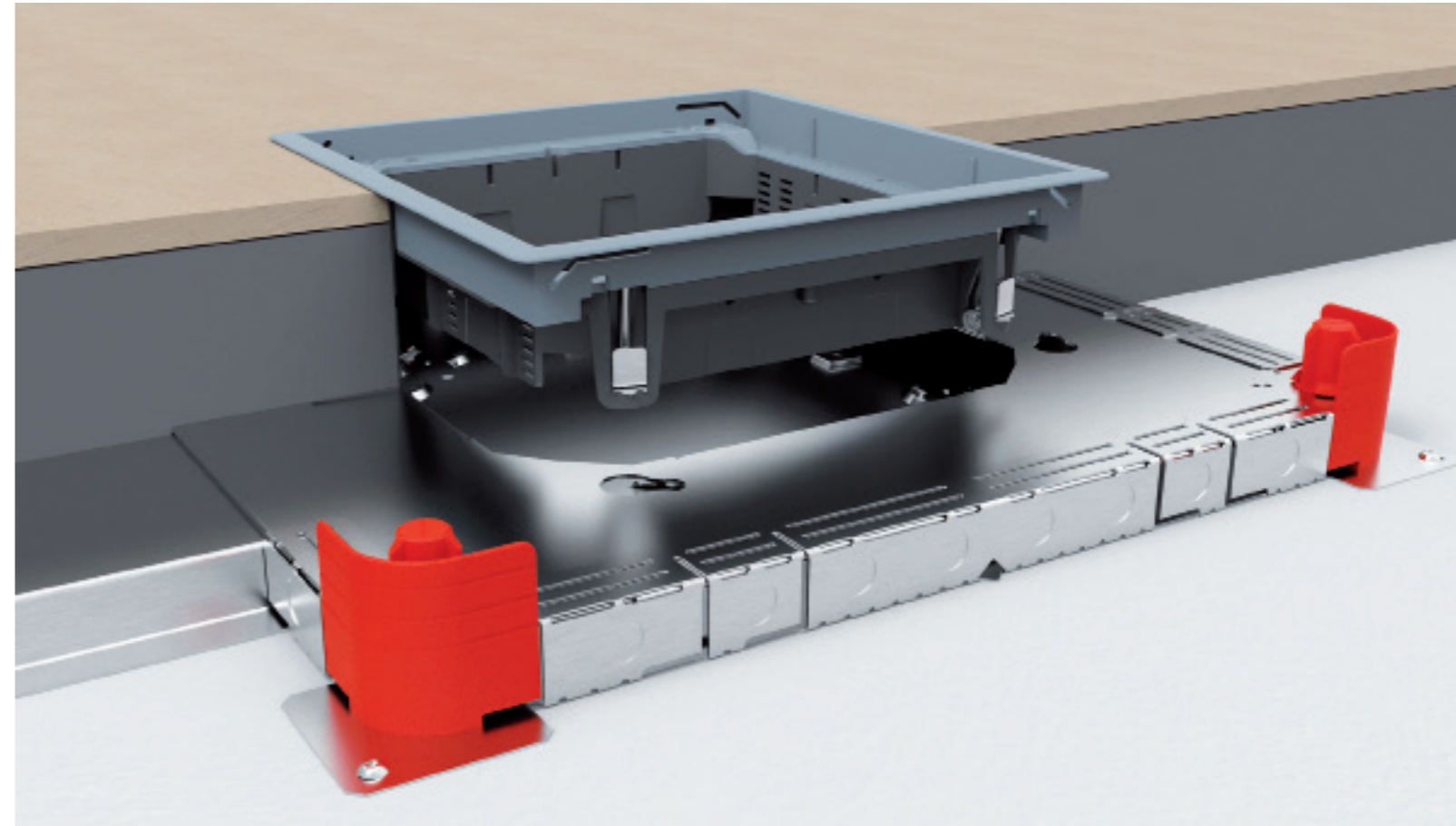
OVG		
OVG	Open flush floor trunking	59
OVGBP	Bottom plate	59
OVG COVER		
DOVG	Cover for flush floor trunking	60
DOVGV.2	Cover for flush floor trunking	60
DOVGV.3	Cover for flush floor trunking	60
DOVGR.3	Cover for flush floor trunking	61
OVG ACCESSORIES		
OVGB	Bend for flush floor trunking	61
OVGT	T-piece for flush floor trunking	61
OVGK	Cross piece for flush floor trunking	62
OVGE	End part for flush floor trunking	62
KDVKK2	Hinged cover rectangular, universal	63
KDVIRK2	Hinged cover rectangular, with border	64
KDVKK3	Hinged cover square, universal	65
KDVIRK3	Hinged cover square, with border	66
KDVIRKV3	Hinged cover square flat, with borde	67
KDRKK3	Hinged cover round, universal	68
OVGZ	Universal side for flush floor trunking	69
OVGP	Extrusion profile flush floor trunking	69
OVGTR	Crossbar for flush floor trunking	69
OVGVST	Bottom for flush floor trunking	70
OVGAN	Screed anchor for flush floor trunking	70
OVGTAP	Carpet border for flush floor trunking	70
OVGHV	Connection angle for flush trunking	71
OVGEQ	Earth conductor clamp for flush trunking	71
OVGEQH	Earth conductor clamp for flush trunking	71
SLOS	Division plate free	72
	TECHNICAL INFORMATION	73



6. ACCESSORIES

ACCESSORIES		
NEOT	Supporting Alu-frame	80
NEOAVT	Anchor base NEO	80
NEOTVT	Support NEO	81
AM	Extension Nut	81
OHE	Packer floorcover	82
IOK	Filler rim for covers	82
KDVIZ	Kit for heavy load	83
BDVIZ	Kit for heavy load	83
TSBU	Apparatus cup universal	84
TSBU45	Apparatus cup 45	84
TSBU50	Apparatus cup 50	85
TSBUD	Apparatus cup angular	85
TSB3	Triple apparatus cup	86
ADPU	Coverplate for TSBU	87
ADPUB	Baseplate for TSBU	87
ADSU	Cap	88
SSBU	Divider plate TSBU	88
IDP	Fixing plate ADPUD	89
GBP	Blind plate	89
TSBL	Low profile apparatus box	90
ASTSBL	Adapter piece low profile apparatus box	90
MK	Silicon box	91
OV	Degreaser	91
	TECHNICAL INFORMATION	92





Uniform concrete floor systems



SCREEDED FLOOR

FLOOR TRUNKING and UNIVERSAL FLOOR BOX

Floor trunkings and floor boxes form a cable grid concealed in the screed. The covers provide access to electricity, data and telecommunications networks.

Our recessed floor trunkings are suitable for all kinds of screed. Our universal NEO floor box is used as an intersection between the trunkings or tubes and works with all types of floor trunking. The height and width are easy to adjust. This means that all the floor trunkings fit perfectly inside the same floor box.

Depending on the shape of the cover, a form element is placed on the floor box. This ensures that screed of 65mm to 298mm can be poured. There is no need for levelling to pour the screed. The form element guarantees a neat and rimless cut-out in the poured screed. Once the screed has been poured, the form element is removed and the cover can then be applied nicely.

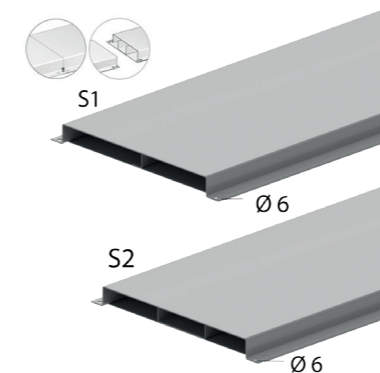
This underfloor system is ideal for supplying large areas, particularly in offices and commercial buildings.

OVERVIEW

Description	Width	Floor trunking = Height 28 mm		Floor trunking = Height 38 mm		Floor trunking = Height 48 mm	
		2 / 3 compartments					
		2	3	2	3	2	3
Floor trunking with integrated ends	170	VGI28.170S1	VGI28.170S2	VGI38.170S1	VGI38.170S2	VGI48.170S1	VGI48.170S2
	250	VGI28.250S1	VGI28.250S2	VGI38.250S1	VGI38.250S2	VGI48.250S1	VGI48.250S2
	350	VGI28.350S1	VGI28.350S2	VGI38.350S1	VGI38.350S2	VGI48.350S1	VGI48.350S2
Light duty floor trunking with integrated ends	170	VGLI28.170S1	VGLI28.170S2	VGLI38.170S1	VGLI38.170S2	VGLI48.170S1	VGLI48.170S2
	250	VGLI28.250S1	VGLI28.250S2	VGLI38.250S1	VGLI38.250S2	VGLI48.250S1	VGLI48.250S2
	350	VGLI28.350S1	VGLI28.350S2	VGLI38.350S1	VGLI38.350S2	VGLI48.350S1	VGLI48.350S2
Accessories	Width	2	3	2	3	2	3
Rising bend	170	VSB28.170S1	VSB28.170S2	VSB38.170S1	VSB38.170S2	VSB48.170S1	VSB48.170S2
	250	VSB28.250S1	VSB28.250S2	VSB38.250S1	VSB38.250S2	VSB48.250S1	VSB48.250S2
	350	VSB28.350S1	VSB28.350S2	VSB38.350S1	VSB38.350S2	VSB48.350S1	VSB48.350S2
End piece	170	VE28.170		VE38.170		VE48.170	
	250	VE28.250		VE38.250		VE48.250	
	350	VE28.350		VE38.350		VE48.350	

VGI28

Floor trunking with integrated ends



With 2 or 3 compartments.

Thickness cover 1,50 mm

Thickness trunk 1,00 mm

Standard finish Pre-galvanised

HD	Reference	↑ mm	↔ mm	↔ mm	↔ mm	kg/m	⊞	Stock	Unit
-	VGI28.170S1	28	170		3000	4.968	150		m
-	VGI28.170S2	28	170		3000	5.467	150		m
-	VGI28.250S1	28	250		3000	6.538	150		m
-	VGI28.250S2	28	250		3000	7.241	150		m
-	VGI28.350S1	28	350		3000	8.500	150		m
-	VGI28.350S2	28	350		3000	9.471	150		m

Tested according EN 50085-2-2.

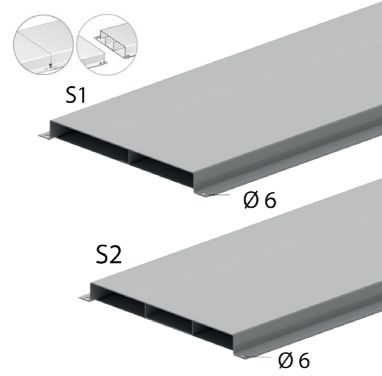
In total 16 predrilled fixing points available per length.

No additional pieces needed for equipotential connection.

The product is patented.

VGI38

Floor trunking with integrated ends



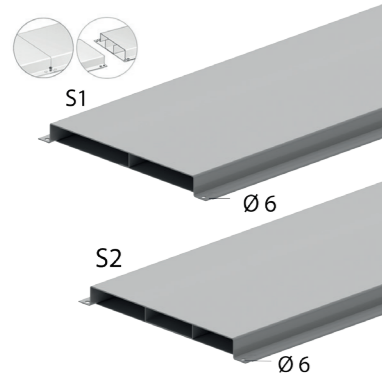
With 2 or 3 compartments.	
Thickness cover	1,50 mm
Thickness trunk	1,00 mm
Standard finish	Pre-galvanised

HD	Reference	↑ mm	↔ mm	↔ mm	↔ mm	kg/m	⊞	Stock	Unit
-	VGI38.170S1	38	170		3000	5.282	150		m
-	VGI38.170S2	38	170		3000	5.860	150		m
-	VGI38.250S1	38	250		3000	6.852	150		m
-	VGI38.250S2	38	250		3000	7.634	150	✓	m
-	VGI38.350S1	38	350		3000	8.814	150		m
-	VGI38.350S2	38	350		3000	9.863	150	✓	m

Tested according EN 50085-2-2.
In total 16 predrilled fixing points available per length.
No additional pieces needed for equipotential connection.
The product is patented.

VGI48

Floor trunking with integrated ends



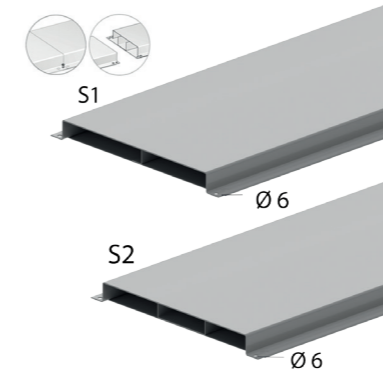
With 2 or 3 compartments.	
Thickness cover	1,50 mm
Thickness trunk	1,00 mm
Standard finish	Pre-galvanised

HD	Reference	↑ mm	↔ mm	↔ mm	↔ mm	kg/m	⊞	Stock	Unit
-	VGI48.170S1	48	170		3000	5.596	150		m
-	VGI48.170S2	48	170		3000	6.252	150		m
-	VGI48.250S1	48	250		3000	7.166	150		m
-	VGI48.250S2	48	250		3000	8.026	150		m
-	VGI48.350S1	48	350		3000	9.128	150		m
-	VGI48.350S2	48	350		3000	10.256	150		m

Tested according EN 50085-2-2.
In total 16 predrilled fixing points available per length.
No additional pieces needed for equipotential connection.
The product is patented.

VGLI28

Floor trunking light integrated ends



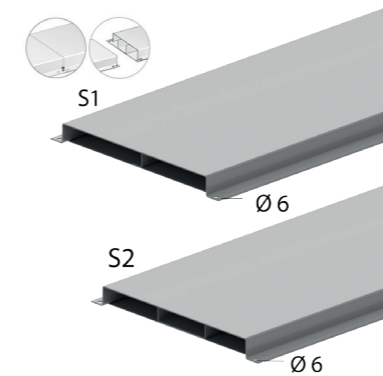
With 2 or 3 compartments.	
Thickness cover	1,00 mm
Thickness trunk	1,00 mm
Standard finish	Pre-galvanised

HD	Reference	↑ mm	↔ mm	↔ mm	↔ mm	kg/m	⊞	Stock	Unit
-	VGLI28.170S1	28	170		3000	3.976	150		m
-	VGLI28.170S2	28	170		3000	4.475	150		m
-	VGLI28.250S1	28	250		3000	5.232	150	✓	m
-	VGLI28.250S2	28	250		3000	5.935	150		m
-	VGLI28.350S1	28	350		3000	6.802	150		m
-	VGLI28.350S2	28	350		3000	7.772	150	✓	m

Tested according EN 50085-2-2.
In total 16 predrilled fixing points available per length.
No additional pieces needed for equipotential connection.
The product is patented.

VGLI38

Floor trunking light integrated ends



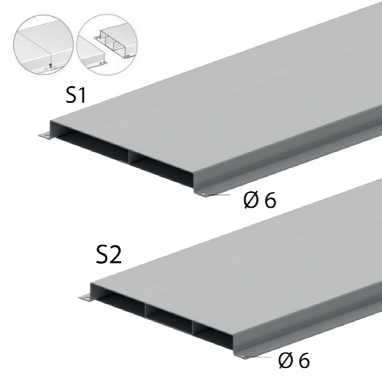
With 2 or 3 compartments.	
Thickness cover	1,00 mm
Thickness trunk	1,00 mm
Standard finish	Pre-galvanised

HD	Reference	↑ mm	↔ mm	↔ mm	↔ mm	kg/m	⊞	Stock	Unit
-	VGLI38.170S1	38	170		3000	4.211	150		m
-	VGLI38.170S2	38	170		3000	4.789	150		m
-	VGLI38.250S1	38	250		3000	5.467	150	✓	m
-	VGLI38.250S2	38	250		3000	6.249	150		m
-	VGLI38.350S1	38	350		3000	7.037	150		m
-	VGLI38.350S2	38	350		3000	8.086	150	✓	m

Tested according EN 50085-2-2.
In total 16 predrilled fixing points available per length.
No additional pieces needed for equipotential connection.
The product is patented.

VGLI48

Floor trunking light integrated ends



With 2 or 3 compartments.

Thickness cover	1,00 mm
Thickness trunk	1,00 mm
Standard finish	Pre-galvanised

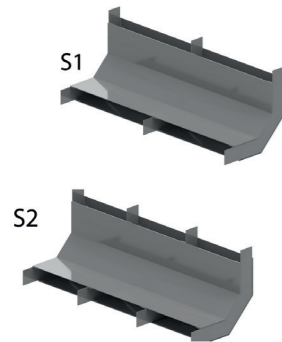
HD	Reference	↑ mm	↔ mm	↔ mm	↔ mm	kg/m	⊞	Stock	Unit
-	VGLI48.170S1	48	170		3000	4.447	150		m
-	VGLI48.170S2	48	170		3000	5.103	150		m
-	VGLI48.250S1	48	250		3000	5.703	150		m
-	VGLI48.250S2	48	250		3000	6.563	150		m
-	VGLI48.350S1	48	350		3000	7.273	150		m
-	VGLI48.350S2	48	350		3000	8.400	150		m

Tested according EN 50085-2-2.

In total 16 predrilled fixing points available per length.
No additional pieces needed for equipotential connection.
The product is patented.

VS

Rising / low elbow for floor trunking



With 2 or 3 compartments.

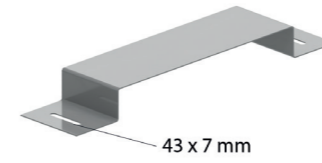
Standard finish		Pre-galvanised							
HD	Reference	↑ mm	↔ mm	↔ mm	↔ mm	kg/piece	⊞	Stock	Unit
-	VS28.170S1	28	170		-	0.600	1		piece
-	VS28.170S2	28	170		-	0.650	1		piece
-	VS28.250S1	28	250		-	0.750	1		piece
-	VS28.250S2	28	250		-	0.800	1		piece
-	VS28.350S1	28	350		-	1.000	1		piece
-	VS28.350S2	28	350		-	1.050	1		piece
-	VS38.170S1	38	170		-	0.600	1		piece
-	VS38.170S2	38	170		-	0.650	1		piece
-	VS38.250S1	38	250		-	0.800	1		piece
-	VS38.250S2	38	250		-	0.850	1		piece
-	VS38.350S1	38	350		-	1.000	1		piece
-	VS38.350S2	38	350		-	1.100	1		piece
-	VS48.170S1	48	170		-	0.600	1		piece
-	VS48.170S2	48	170		-	0.700	1		piece
-	VS48.250S1	48	250		-	0.750	1		piece
-	VS48.250S2	48	250		-	0.850	1		piece
-	VS48.350S1	48	350		-	1.050	1		piece
-	VS48.350S2	48	350		-	1.150	1		piece

Tested according EN 50085-2-2.

To connect the galvanised floor trunking with a rising trunking.
Also useful as a low piece.

VK

Joining piece for floor trunking



To couple two trunkings.

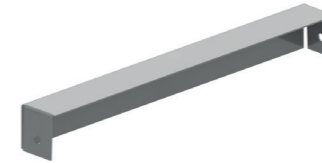
Standard finish		Pre-galvanised							
HD	Reference	↑ mm	↔ mm	↔ mm	↔ mm	kg/piece	⊞	Stock	Unit
-	VK28.170	28	170		-	0.266	12	✓	piece
-	VK28.250	28	250		-	0.331	12	✓	piece
-	VK28.350	28	350		-	0.411	12	✓	piece
-	VK38.170	38	170		-	0.282	12	✓	piece
-	VK38.250	38	250		-	0.347	12	✓	piece
-	VK38.350	38	350		-	0.427	12	✓	piece
-	VK48.170	48	170		-	0.298	12	✓	piece
-	VK48.250	48	250		-	0.363	12	✓	piece
-	VK48.350	48	350		-	0.443	12	✓	piece

Tested according EN 50085-2-2.

To order per full packaging.

VE

End piece for floor trunking



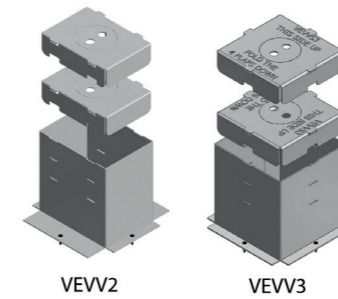
Standard finish Pre-galvanised

HD	Reference	↑ mm	↔ mm	↔ mm	↔ mm	kg/piece	⊞	Stock	Unit
-	VE28.170	30	165		-	0.080	1		piece
-	VE28.250	30	245		-	0.110	1		piece
-	VE28.350	30	345		-	0.160	1		piece
-	VE38.170	40	165		-	0.100	1		piece
-	VE38.250	40	245		-	0.140	1		piece
-	VE38.350	40	345		-	0.180	1		piece
-	VE48.170	50	165		-	0.110	1		piece
-	VE48.250	50	245		-	0.160	1		piece
-	VE48.350	50	345		-	0.220	1		piece

Tested according EN 50085-2-2.

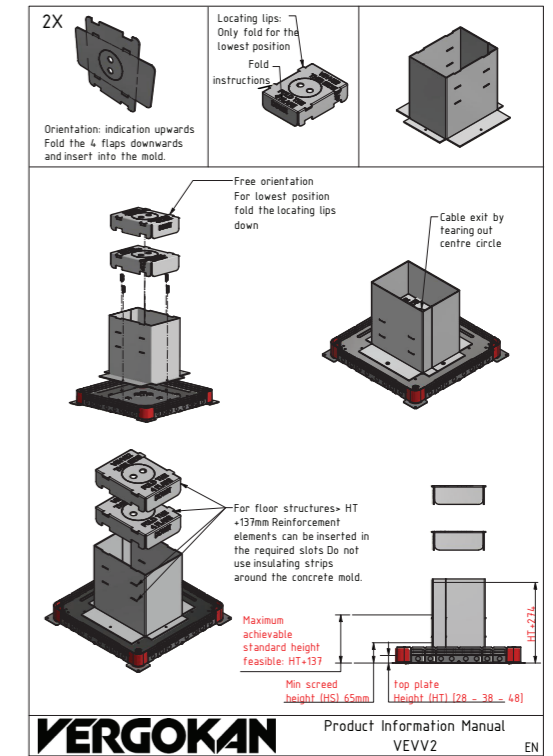
VEVV

Form element



Delivered with reinforcing plates.

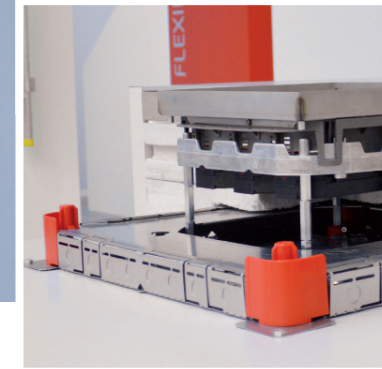
Standard finish		Polypropylene							
HD	Reference	↑ mm	↔ mm	↖ mm	↗ mm	kg/piece	📦	Stock	Unit
-	VEVV2	250	190		270	0.700	12	✓	piece
-	VEVV3	250	270		270	0.500	12	✓	piece



Height screed: max. 298 mm
To order per full packaging.

VEVV2: For rectangular cover set
- BDVKK2
- KDVKK2
- KDVIT2
- KDVIRK2
- BDVITWD2

VEVV3: For square cover set
- BDVKK3
- KDVKK3
- KDVIT3, KDVITV3
- KDVIRK3
- BDVITWD3
- KDVITWD3, KDVITWDV3
- DVITWD3, DVITWDV3



NEO

Universal floorbox

For all widths and heights of floor trunkings.
For square, rectangular and round cover set.

Standard finish		Pre-galvanised							
HD	Reference	↑ mm	↔ mm	↖ mm	↗ mm	kg/piece	📦	Stock	Unit
-	NEO	65	490		490	4.150	1	✓	piece

Tested to EN 50085-2-2.

Side panels are equipped with break-away surfaces for Ø 16 mm for assembly with pipes.
Provided with 4 alignment marks.
Bottom plate is provided with earthing clamp.

Height is adjustable to suit the height of trunking, 28, 38 or 48 mm.
Side panels are cut and folded to suit the width of the trunking.
A form element, type VEVV or VERV, is required to install the floor box.
Minimum height of the screed: 65mm

Height adjustable - can easily be adjusted to suit the trunking or conduit being used		
Floor trunking height 28 mm	Floor trunking height 38 mm	Floor trunking height 48 mm
Screed depth: 65 mm to 278 mm	Screed depth: 75 mm to 288 mm	Screed depth: 85 mm to 298 mm

VERV

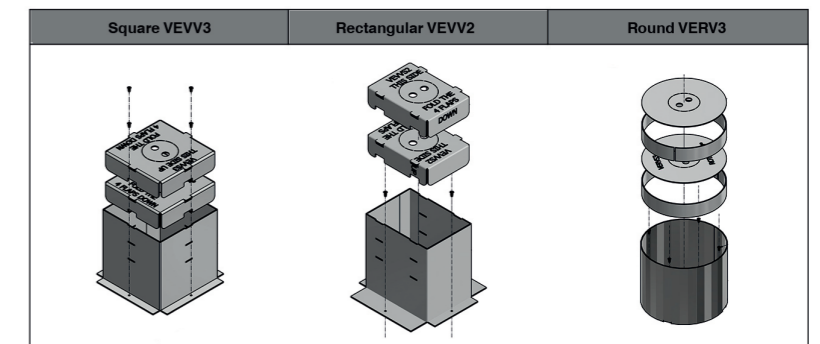
Form element round



Standard finish		Polypropylene							
HD	Reference	↑ mm	↔ mm	↖ mm	↗ mm	kg/piece	📦	Stock	Unit
-	VERV3	250	330		330	0.900	12	✓	piece

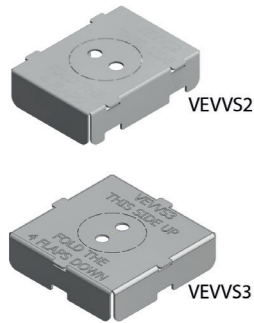
Height screed: max. 298 mm.
To order per full packaging.

VERV3: For round cover set
- BDRKK3
- KDRKK3
- BDRITWD3
- DRITWD3
- DRIT3



VEVVS

Inner layer square / rectangular for VEVV form element



Standard finish		Polypropylene								
HD	Reference	↑ mm	↔ mm	↔ mm	↔ mm	kg/piece	⊞	Stock	Unit	
-	VEVVS2	-				0.250	10	✓	piece	
-	VEVVS3	-				0.250	10	✓	piece	

VEVVS2: rectangular
VEVVS3: square

VERVS

Inner layer round for VERV3 form element



Standard finish		Polypropylene								
HD	Reference	↑ mm	↔ mm	↔ mm	↔ mm	kg/piece	⊞	Stock	Unit	
-	VERVS3	-				0.250	6	✓	piece	

VEVP

Form element polished concrete



To be fixed with the NEOT, VEVV, NEO.

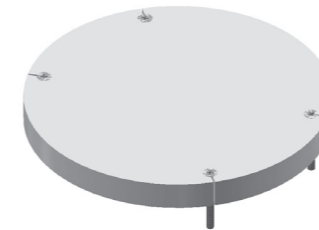
Standard finish		expanded polystyrene								
HD	Reference	↑ mm	↔ mm	↔ mm	↔ mm	kg/piece	⊞	Stock	Unit	
-	VEVP2	-	189		264	0.211	1		piece	
-	VEVP3	-	264		264	0.231	1	✓	piece	

This form element can be polished.
Mounted on the NEOT3 that is supplied with the cover at walking floor height.
VEVP2: For rectangular cover set
- KDVT2
- BDVITWD2

VEVP3: For square cover set
- KDVT3, KDVT3
- BDVITWD3
- KDVTWD3, KDVTWD3
- DVITWD3, DVITWD3

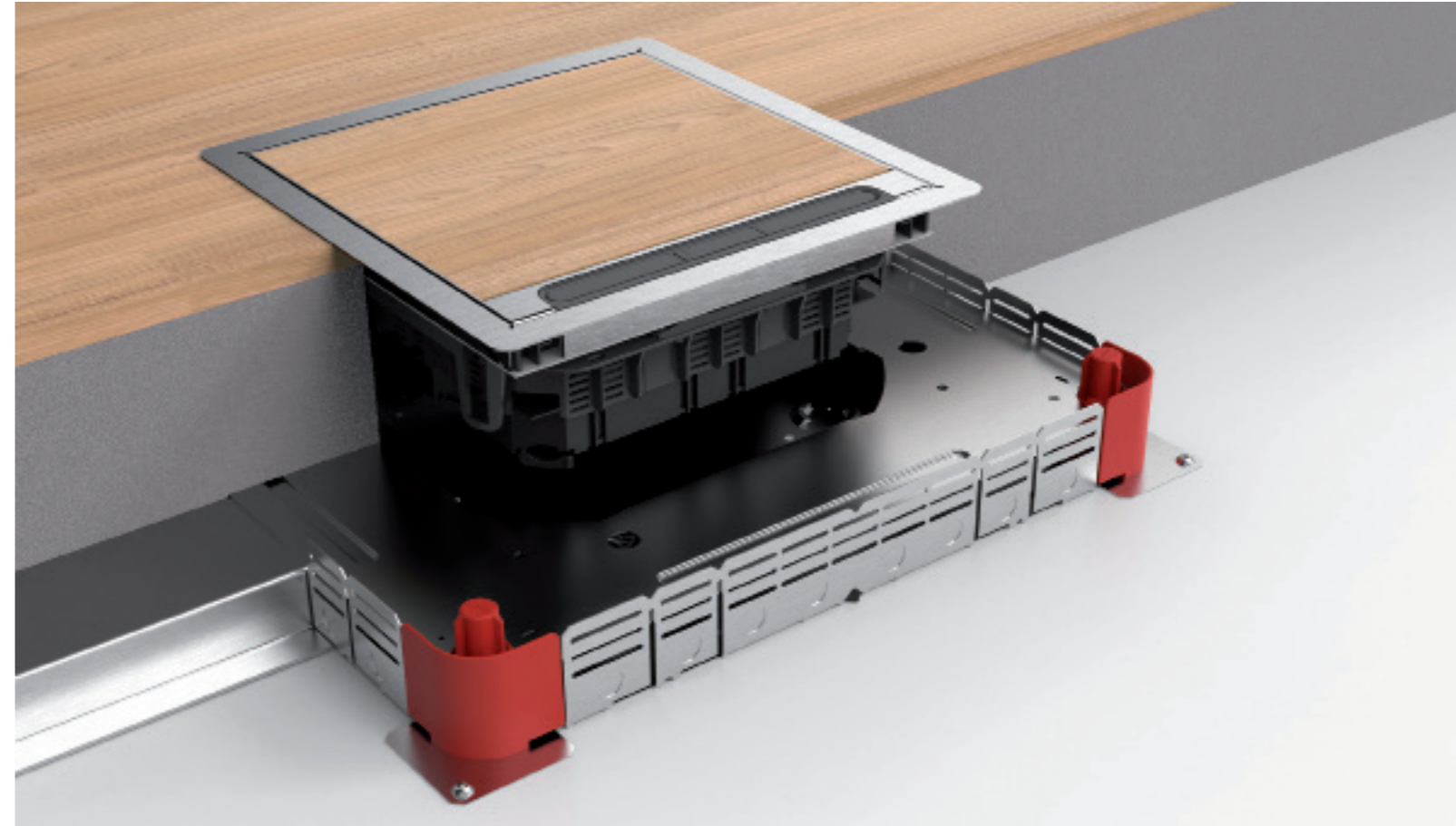
VERP

Form element round polished concrete



Standard finish		expanded polystyrene								
HD	Reference	↑ mm	↔ mm	↔ mm	↔ mm	kg/piece	⊞	Stock	Unit	
-	VERP3	-				0.244	1		piece	
Fix with:										
-	NEOT	-	-	-	-	-	-	-	-	

To be fixed with the NEOT, VEVV, NEO.
For round cover set
- BDRITWD3
- DRITWD3
- DRIT3



Covers for concrete floor, not water resistant

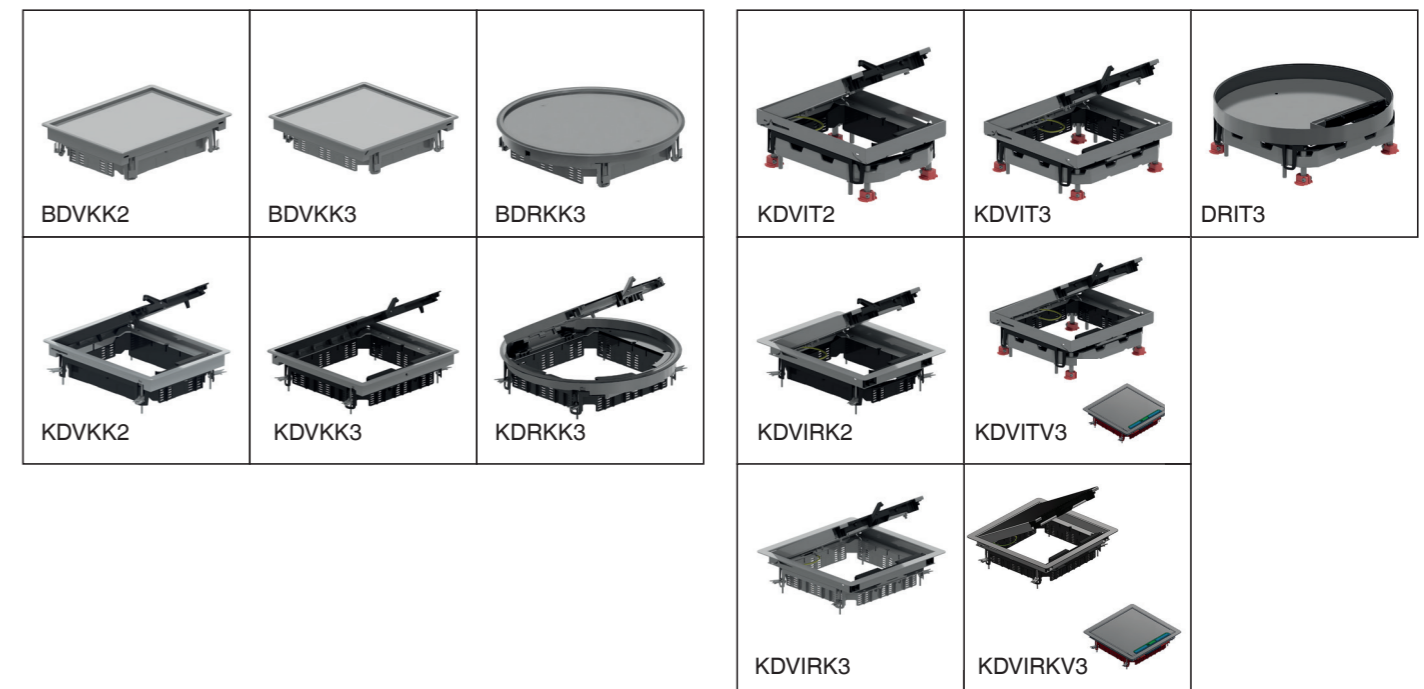
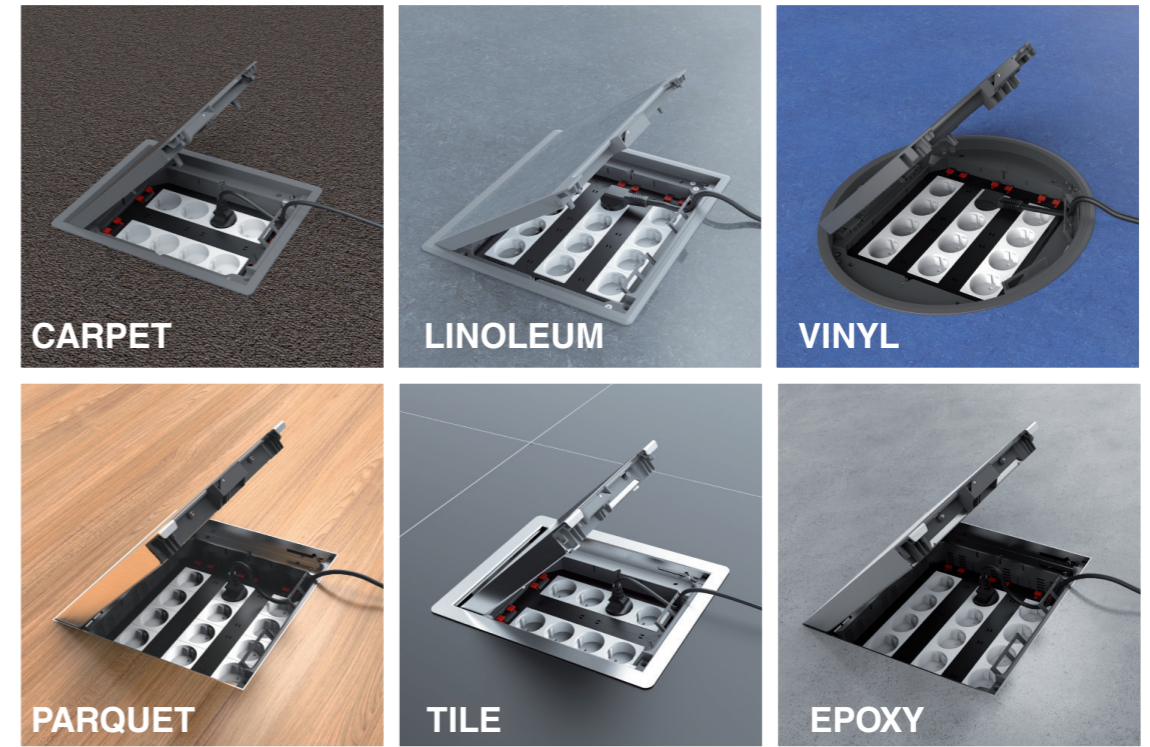


SCREEDED FLOOR, NOT WATER RESISTANT

CARPET | LINOLEUM | VINYL - PARQUET | TILE | EPOXY

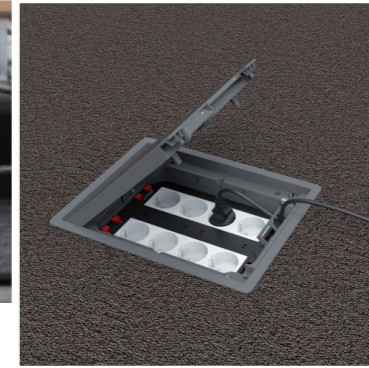
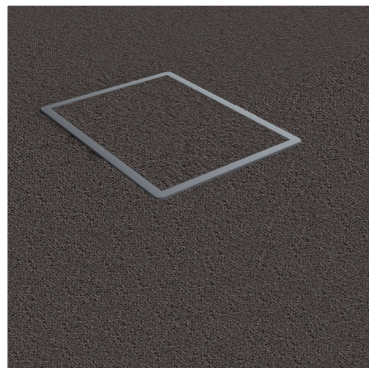
Depending on the shape of the cover, a form element is placed on the universal NEO floor box. This ensures that screed of 65mm to 298mm can be poured. Once the screed has been poured, the form element is removed and the cover can then be applied nicely with the clamps provided.

The stainless steel covers with a bottom frame are then easy to level using the NEOT aluminium frame supplied. The minimalist design of the hinged covers makes for a nice discreet unit in any interior. These covers are made of polypropylene or grade 304 stainless steel. The covers are also suitable for any type and thickness of floor finish which is dry treated.



	Code	Description	Material	Depth of cover cut-out	Compartments	To standard
NEO + VEVV2	BDVKK2	Blind cover - rectangular	Polypropylene	12 mm		IP 30
	KDVKK2	Hinged cover - rectangular	Polypropylene	12 mm	2 TSBU / 1 TSBL2	IP 20 / IP 30*
	KDVIT2	Hinged cover - rectangular	Stainless steel 304	26 mm	2 TSBU / 1 TSBL2	IP 20 / IP 30*
	KDVIRK2	Hinged cover - rectangular - with border	Stainless steel 304	26 mm	2 TSBU / 1 TSBL2	IP 20 / IP 30*
NEO + VEVV3	BDVKK3	Blind cover - square	Polypropylene	12 mm		IP 30
	KDVKK3	Hinged cover - square	Polypropylene	12 mm	3 TSBU / 1 TSBL3	IP 20 / IP 30*
	KDVIT3	Hinged cover - square	Stainless steel 304	26 mm	3 TSBU / 1 TSBL3	IP 20 / IP 30*
	KDVITV3	Hinged cover - square - flat stainless steel	Stainless steel 304	flat	3 TSBU / 1 TSBL3	IP 20 / IP 30*
	KDVIRK3	Hinged cover - square - with border	Stainless steel 304	26 mm	3 TSBU / 1 TSBL3	IP 20 / IP 30*
	KDVIRKV3	Hinged cover - square - flat - with border	Stainless steel 304	flat	3 TSBU / 1 TSBL3	IP 20 / IP 30*
NEO + VERV3	BDRKK3	Blind cover - round	Polypropylene	12 mm		IP 30
	KDRKK3	Hinged cover - round	Polypropylene	12 mm	max. 3 TSBU / 1 TSBL3	IP 20 / IP 30*
	DRIT3	Hinged cover - round	Stainless steel 304	26 mm	max. 3 TSBU / 1 TSBL3	IP 20 / IP 30*

* non-active condition



COVERS FOR CONCRETE FLOOR, NOT WATER RESISTANT

COVERS FOR CONCRETE FLOOR, NOT WATER RESISTANT

BDVKK2

Blind cover rectangular, universal

Color	grey RAL 7011 / Black RAL 9011
Max. load	1500 N (small surface area)
Max. load	2000 N (large surface area)
Non-active condition	IP 30
Depth of floor covering	Min. 5 mm - Max. 12 mm
Thickness steel plate	3 mm
Standard finish	Polypropylene



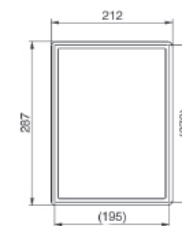
HD	Reference	↑ mm	↔ mm	↔ mm	↔ mm	kg/piece	📦	Stock	Unit
-	BDVKK2.5-7011	-	192	267	267	1.750	6	✓	piece
-	BDVKK2.5-9011	-	192	267	267	1.750	6	✓	piece

Tested to EN 50085-2-2.

Depth of floor covering is standard 5 mm and can be reduced by fitting packers OHEVB2.2 and/or OHEVB2.5.

Can be fixed through included universal clamps in screed floor.

For use in dry floors only.



KDVKK2

Hinged cover rectangular, universal

Build-in frame + hinged cover + cable outlet unit

Color	grey RAL 7011 / Black RAL 9011
Max. load	1500 N (small surface area)
Max. load	2000 N (large surface area)
Active condition	IP 20
Non-active condition	IP 30
Depth of floor covering	Min. 5 mm - Max. 12 mm
Thickness steel plate	3 mm
Standard finish	Polypropylene



HD	Reference	↑ mm	↔ mm	↔ mm	↔ mm	kg/piece	📦	Stock	Unit
-	KDVKK2.5-7011	-	192	267	267	1.650	6	✓	piece
-	KDVKK2.5-9011	-	192	267	267	1.650	6	✓	piece

Tested to EN 50085-2-2.

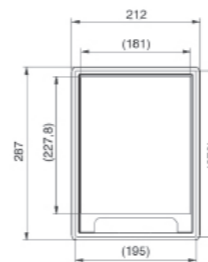
Hinged cover for 2 compartments or 1 low profile apparatus box.

Depth of floor covering is standard 5 mm and can be reduced by fitting packers OHEV2.2 and/or OHEV2.5.

Can be fixed through included universal clamps in screed floor.

Hinged cover is provided with 1 cable outlet with integrated push lever and cable organiser. Hinged cover must not be earthed.

For use in dry floors only.





COVERS FOR CONCRETE FLOOR, NOT WATER RESISTANT

COVERS FOR CONCRETE FLOOR, NOT WATER RESISTANT

BDVKK3

Blind cover square, universal

Color	grey RAL 7011 / Black RAL 9011
Max. load	1500 N (small surface area)
Max. load	2000 N (large surface area)
Non-active condition	IP 30
Depth of floor covering	Min. 5 mm - Max. 12 mm
Thickness steel plate	3 mm
Standard finish	Polypropylene



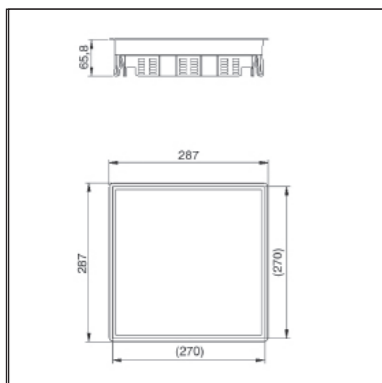
HD	Reference	↑ mm	↔ mm	↔ mm	↔ mm	kg/piece	📦	Stock	Unit
-	BDVKK3.5-7011	-	267		267	2.300	6	✓	piece
-	BDVKK3.5-9011	-	267		267	2.300	6	✓	piece

Tested to EN 50085-2-2.

Depth of floor covering is standard 5 mm and can be reduced by fitting packers OHEVB3.2 and/or OHEVB3.5.

Can be fixed through included universal clamps in screed floor.

For use in dry floors only.



KDVKK3

Hinged cover square, universal

Build-in frame + hinged cover + cable outlet unit

Color	grey RAL 7011 / Black RAL 9011
Max. load	1500 N (small surface area)
Max. load	2000 N (large surface area)
Active condition	IP 20
Non-active condition	IP 30
Depth of floor covering	Min. 5 mm - Max. 12 mm
Thickness steel plate	3 mm
Standard finish	Polypropylene



HD	Reference	↑ mm	↔ mm	↔ mm	↔ mm	kg/piece	📦	Stock	Unit
-	KDVKK3.5-7011	-	267		267	2.200	6	✓	piece
-	KDVKK3.5-9011	-	267		267	2.200	6	✓	piece

Tested to EN 50085-2-2.

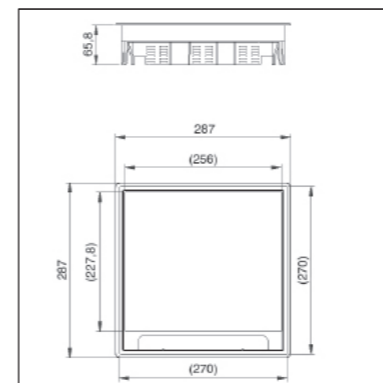
Hinged cover for 3 compartments or 1 low profile apparatus box.

Depth of floor covering is standard 5 mm and can be reduced by fitting packers OHEV3.2 and/or OHEV3.5.

Can be fixed through included universal clamps in screed floor.

Hinged cover is provided with 2 cable outlets with integrated push lever and 2 cable organisers. Hinged cover must not be earthed.

For use in dry floors only.





COVERS FOR CONCRETE FLOOR, NOT WATER RESISTANT



COVERS FOR CONCRETE FLOOR, NOT WATER RESISTANT



BDRKK3

Blind cover round, universal

Color	grey RAL 7011 / Black RAL 9011
Max. load	1500 N (small surface area)
Max. load	2000 N (large surface area)
Non-active condition	IP 30
Depth of floor covering	Min. 5 mm - Max. 12 mm
Thickness steel plate	3 mm
Standard finish	Polypropylene

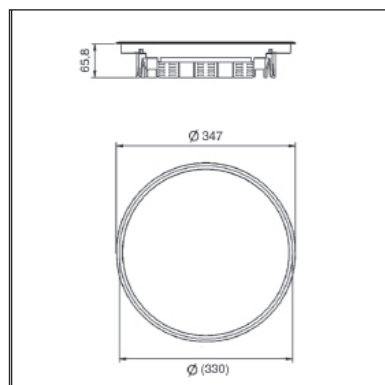
HD	Reference	↑ mm	↔ mm	↔ mm	↔ mm	kg/piece	📦	Stock	Unit
-	BDRKK3.5-7011	-	327		327	2.400	6	✓	piece
-	BDRKK3.5-9011	-	327		327	2.400	6		piece

Tested to EN 50085-2-2.

Depth of floor covering is standard 5 mm and can be reduced by fitting packers OHER3.2 and/or OHER3.5.

Can be fixed through included universal clamps in screed floor.

For use in dry floors only.



KDRKK3

Hinged cover round, universal

Build-in frame + hinged cover + cable outlet unit

Color	grey RAL 7011 / Black RAL 9011
Max. load	1500 N (small surface area)
Max. load	2000 N (large surface area)
Active condition	IP 20
Non-active condition	IP 30
Depth of floor covering	Min. 5 mm - Max. 12 mm
Thickness steel plate	3 mm
Standard finish	Polypropylene

HD	Reference	↑ mm	↔ mm	↔ mm	↔ mm	kg/piece	📦	Stock	Unit
-	KDRKK3.5-7011	-	327		327	2.450	6	✓	piece
-	KDRKK3.5-9011	-	327		327	2.450	6	✓	piece

Tested to EN 50085-2-2.

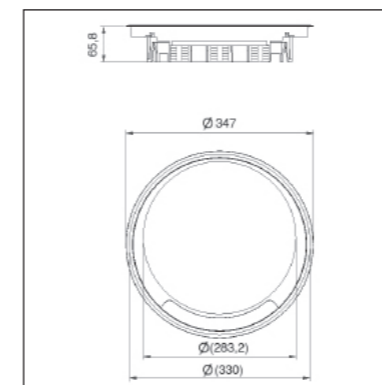
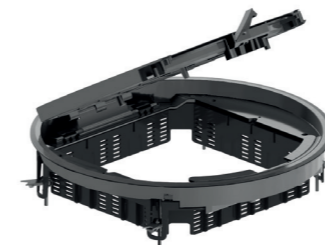
Hinged cover for 3 compartments or 1 low profile apparatus box.

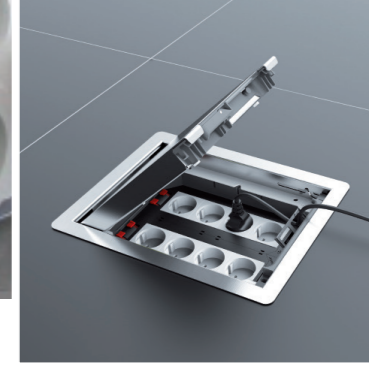
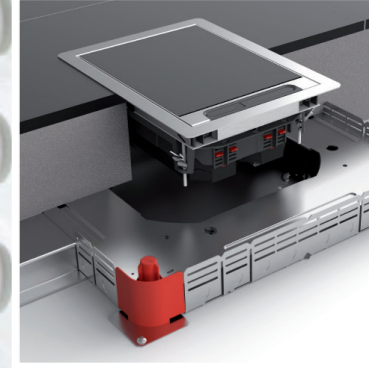
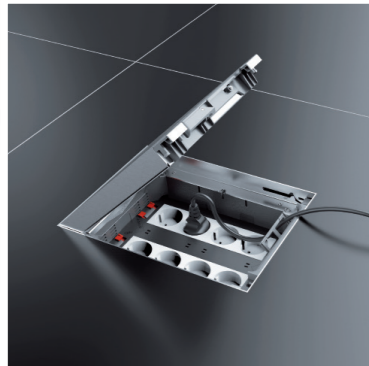
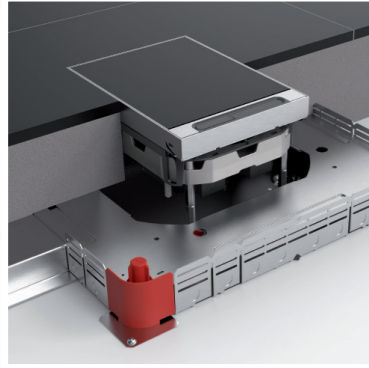
Depth of floor covering is standard 5 mm and can be reduced by fitting packers OHER3.2 and/or OHER3.5.

Can be fixed through included universal clamps in screed floor.

Hinged cover is provided with 2 cable outlets with integrated push lever and 2 cable organisers. Hinged cover must not be earthed.

For use in dry floors only.



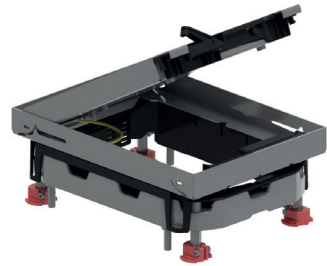


COVERS FOR CONCRETE FLOOR, NOT WATER RESISTANT

COVERS FOR CONCRETE FLOOR, NOT WATER RESISTANT

KDVIT2

Hinged cover rectangular, Stainl. steel



Build-in frame + tileframe + cable outlet + alu frame	
Max. load	2000 N (small surface area)
Max. load	3000 N (large surface area)
Active condition	IP 20
Non-active condition	IP 30
Depth of floor covering	Max. 26 mm
Standard finish	Stainless Steel 304

HD	Reference	↑ mm	↔ mm	↔ mm	↔ mm	kg/piece	⊞	Stock	Unit
-	KDVIT2	-	192		267	2.500	1	✓	piece

Tested to EN 50085-2-2.

Hinged cover for 2 compartments or 1 low profile apparatus box .

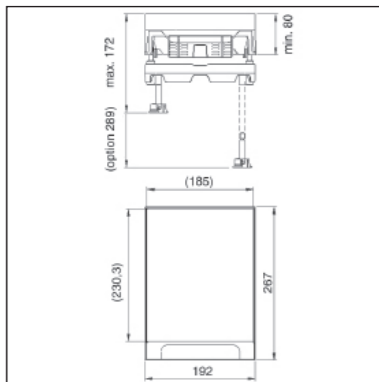
Depth of floor covering can be reduced by fitting packers OHEV2.2 and/or OHEV2.5.

Can be leveled by adjusting 4 bolts on included alu-frame NEOT2.

Hinged cover is provided with 1 cable outlet with integrated push lever and cable organiser.
Hinged cover is provided with an earthing strip between cover and frame.

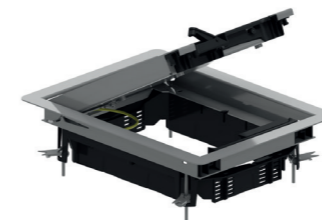
A reinforcement kit KDVIZ2 is available to support heavy loads.

For use in dry floors only.



KDVIRK2

Hinged cover rectangular, with border



Build-in frame with border + tileframe + cable outlet	
Max. load	2000 N (small surface area)
Max. load	3000 N (large surface area)
Active condition	IP 20
Non-active condition	IP 30
Depth of floor covering	Max. 26 mm
Standard finish	Stainless Steel 304

HD	Reference	↑ mm	↔ mm	↔ mm	↔ mm	kg/piece	⊞	Stock	Unit
-	KDVIRK2	-	192		267	2.125	1	✓	piece

Tested to EN 50085-2-2.

Hinged cover for 2 compartments or 1 low profile apparatus box.

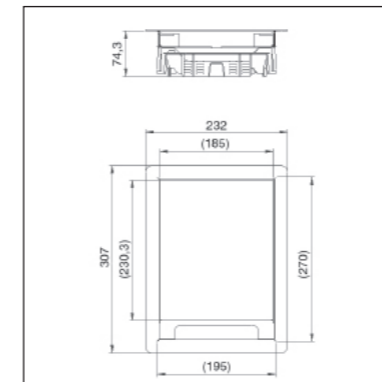
Depth of floor covering can be reduced by fitting packers OHEV2.2 and/or OHEV2.5

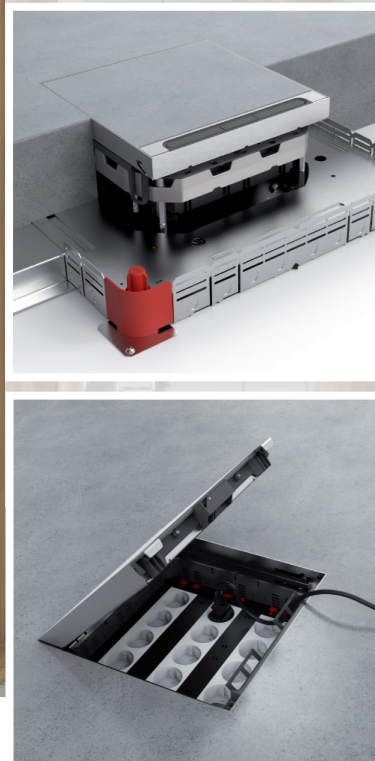
Can be fixed through included universal clamps in screed floor.

Hinged cover is provided with 1 cable outlet with integrated push lever and cable organiser.
Hinged cover is provided with an earthing strip between cover and frame.

A reinforcement kit KDVIZ2 is available to support heavy loads.

For use in dry floors only.





COVERS FOR CONCRETE FLOOR, NOT WATER RESISTANT

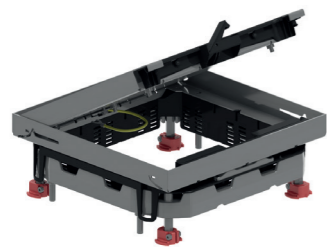


COVERS FOR CONCRETE FLOOR, NOT WATER RESISTANT



KDVIT3

Hinged cover square, stainless steel



Build-in frame + tileframe + cable outlet + alu frame	
Max. load	2000 N (small surface area)
Max. load	3000 N (large surface area)
Active condition	IP 20
Non-active condition	IP 30
Depth of floor covering	Max. 26 mm
Standard finish	Stainless Steel 304

HD	Reference	↑ mm	↔ mm	↔ mm	↔ mm	kg/piece	📦	Stock	Unit
-	KDVIT3	-	267		267	3.100	1	✓	piece

Tested to EN 50085-2-2.

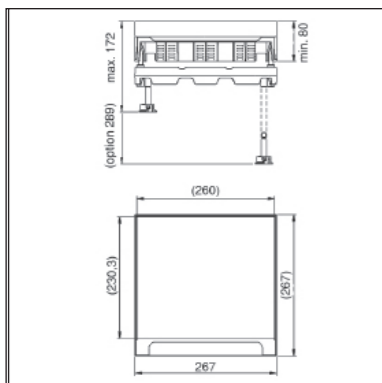
Hinged cover for 3 compartments or 1 low profile apparatus box.

Depth of floor covering can be reduced by fitting packers OHEV3.2 and/or OHEV3.5.

Can be leveled by adjusting 4 bolts on included alu-frame NEOT3.
Hinged cover is provided with 2 cable outlets with integrated push lever and 2 cable organisers.
Hinged cover is provided with an earthing strip between cover and frame.

A reinforcement kit KDVIZ3 is available to support heavy loads.

For use in dry floors only.



KDVITV3

Hinged cover square flat stainless steel



Build-in frame + full cover + cable outlet + alu frame	
Max. load	2000 N (small surface area)
Max. load	3000 N (large surface area)
Active condition	IP 20
Non-active condition	IP 30
Depth of floor covering	Flat
Standard finish	Stainless Steel 304

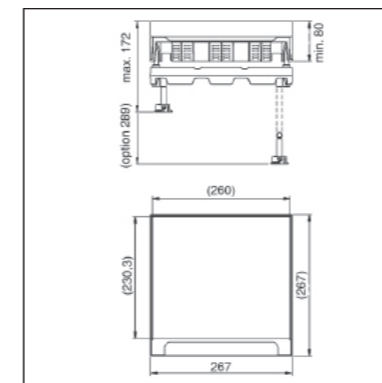
HD	Reference	↑ mm	↔ mm	↔ mm	↔ mm	kg/piece	📦	Stock	Unit
-	KDVITV3	-	267		267	3.350	1	✓	piece

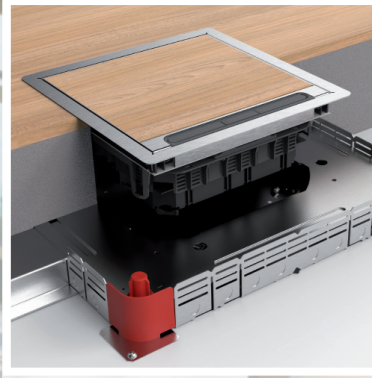
Tested to EN 50085-2-2.

Hinged cover for 3 compartments or 1 low profile apparatus box. Flat cover filled with stainless steel.

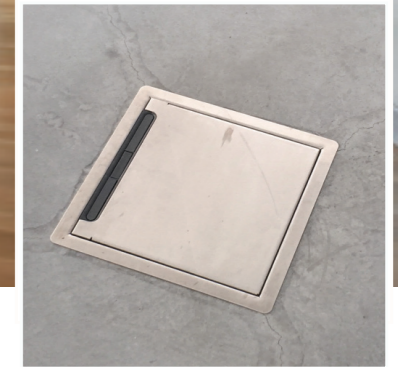
Can be leveled by adjusting 4 bolts on included alu-frame NEOT3.
Hinged cover is provided with 2 cable outlets with integrated push lever and 2 cable organisers.
Hinged cover is provided with an earthing strip between cover and frame.

For use in dry floors only.





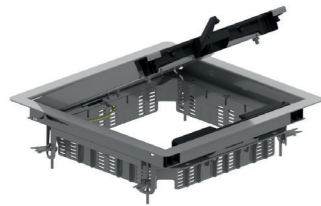
COVERS FOR CONCRETE FLOOR, NOT WATER RESISTANT



COVERS FOR CONCRETE FLOOR, NOT WATER RESISTANT

KDVIRK3

Hinged cover square, with border



Build-in frame with border + tileframe + cable outlet	
Max. load	2000 N (small surface area)
Max. load	3000 N (large surface area)
Active condition	IP 20
Non-active condition	IP 30
Depth of floor covering	Max. 26 mm
Standard finish	Stainless Steel 304

HD	Reference	↑ mm	↔ mm	↔ mm	↔ mm	kg/piece	📦	Stock	Unit
-	KDVIRK3	-	267		267	2.675	1	✓	piece

Tested to EN 50085-2-2.

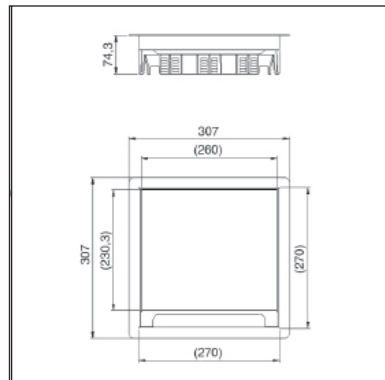
Hinged cover for 3 compartments or 1 low profile apparatus box.
Depth of floor covering can be reduced by fitting packers OHEV3.2 and/or OHEV3.5

Can be fixed through included universal clamps in screed floor.

Hinged cover is provided with 2 cable outlets with integrated push lever and 2 cable organisers.
Hinged cover is provided with an earthing strip between cover and frame.

A reinforcement kit KDVIZ3 is available to support heavy loads.

For use in dry floors only.



KDVIRKV3

Hinged cover square flat, with border



Build-in frame with border + full cover + cable outlet	
Max. load	2000 N (small surface area)
Max. load	3000 N (large surface area)
Active condition	IP 20
Non-active condition	IP 30
Depth of floor covering	flat
Standard finish	Stainless Steel 304

HD	Reference	↑ mm	↔ mm	↔ mm	↔ mm	kg/piece	📦	Stock	Unit
-	KDVIRKV3	-	267		267	2.675	1	✓	piece

Tested to EN 50085-2-2.

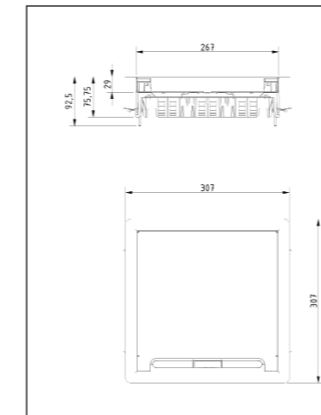
Hinged cover for 3 compartments or 1 low profile apparatus box. Flat cover filled with stainless steel.

Can be fixed through included universal clamps in screed floor.

Hinged cover is provided with 2 cable outlets with integrated push lever and 2 cable organisers.
Hinged cover is provided with an earthing strip between cover and frame.

Extra advantage compared to KDVIRK3: it can be used in floors where it's not possible or recommended to fill the cover with the same material as the floor.

For use in dry floors only.





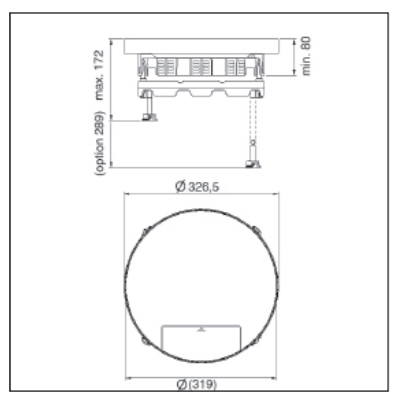
COVERS FOR CONCRETE FLOOR, NOT WATER RESISTANT

DRIT3
Cover round, lateral cable outlet

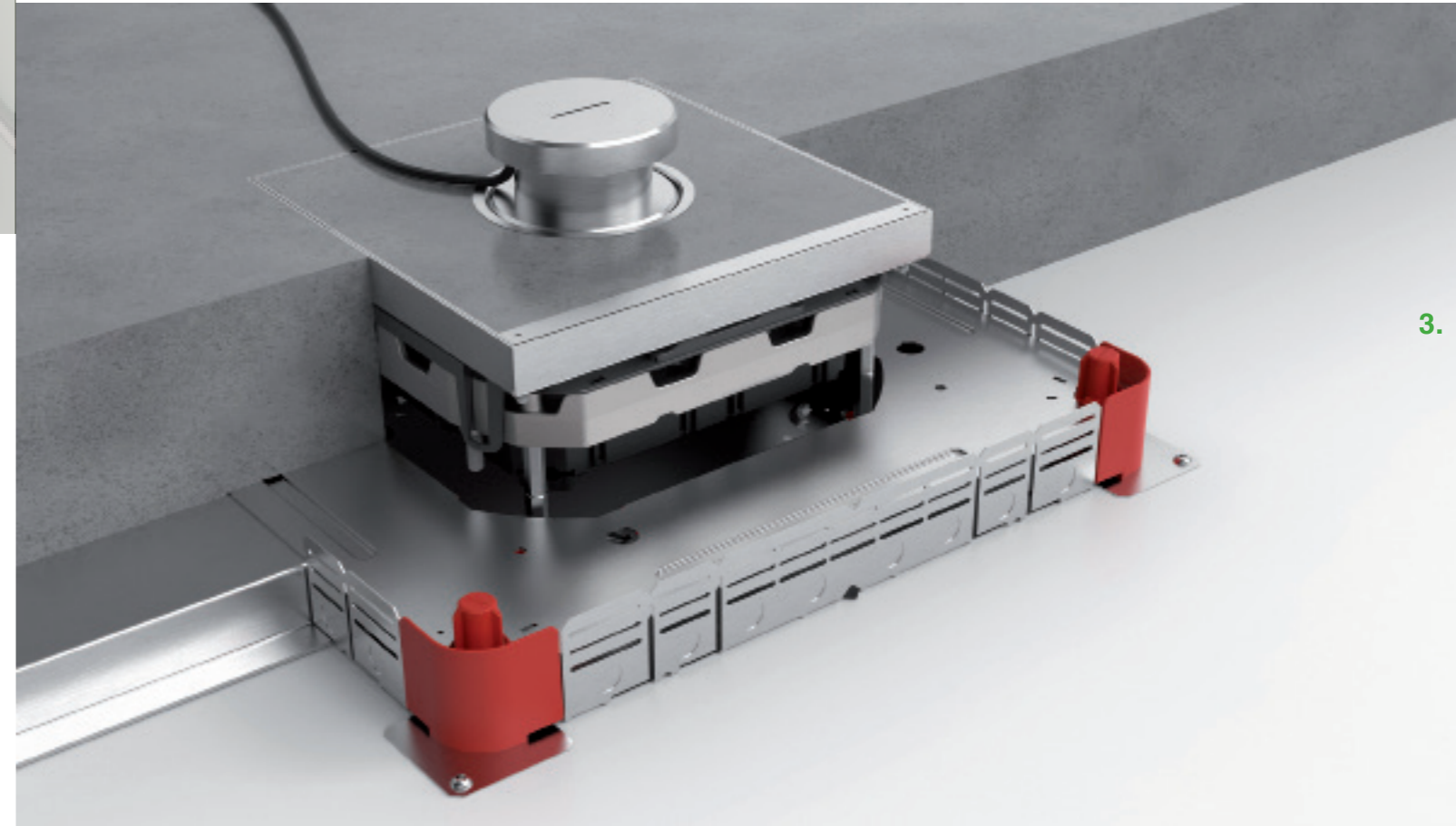


Build-in frame + tileframe + cable outlet + alu frame	
Max. load	2000 N (small surface area)
Max. load	3000 N (large surface area)
Active condition	IP 20
Non-active condition	IP 30
Depth of floor covering	Max. 26 mm
Standard finish	Stainless Steel 304

HD	Reference	↑ mm	↔ mm	↔ mm	↔ mm	kg/piece	⊞	Stock	Unit
-	DRIT3	-	327	327	327	3.800	1	✓	piece



Tested to EN 50085-2-2.
Cover for 3 compartments.
Can be leveled by adjusting 4 bolts on included alu-frame NEOT3.
Cover is provided with 1 cable outlets with integrated push lever and cable organiser.
Cover is provided with an earthing strip between cover and frame.
For use in dry floors only.



3.

Covers for concrete floor, water resistant



**SCREEDED FLOOR, WATER RESISTANT
TILE | EPOXY | POLISHED CONCRETE**

Depending on the shape of the cover, a form element is placed on the universal NEO floor box. This ensures that screed of 65mm to 298mm can be poured. Once the screed has been poured, the form element is removed and the cover can then be applied nicely.

The covers are easy to level using the NEOT aluminium frame supplied.

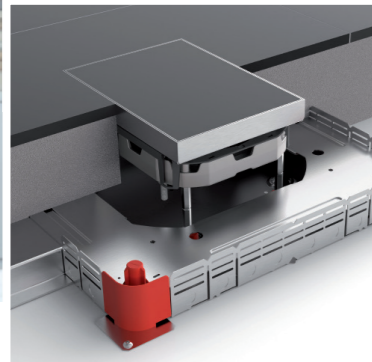
The minimalist design of the hinged and blanking covers makes for a nice discreet unit in any interior. These covers are made of grade 304 stainless steel. The covers are also ideal for areas which are wet treated.

COVERS FOR CONCRETE FLOOR, WATER RESISTANT

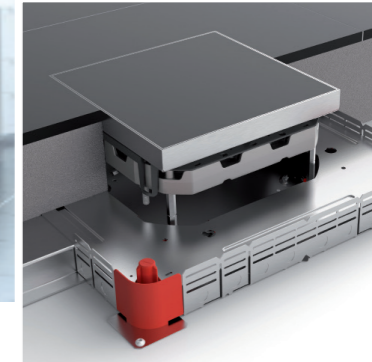


	Code	Description	Material	Depth of cover cut-out	Compartments	To standard
NEO + VEVV2	BDVITWD2	Blind cover - rectangulaire	Stainless steel 304	26 mm		IP 53
NEO + VEVV3	BDVITWD3	Blind cover - square	Stainless steel 304	26 mm		IP 53
	DVITWD3	Tile-cassette - square	Stainless steel 304	26 mm	3 TSBU / 1 TSBL3	IP 23 / IP 53*
	DVITWDV3	Tile-cassette - square - flat	Stainless steel 304	flat	3 TSBU / 1 TSBL3	IP 23 / IP 53*
	KDVITWD3	Hinged cover - square	Stainless steel 304	26 mm	3 TSBU / 1 TSBL3	IP 23 / IP 53*
	KDVITWDV3	Hinged cover - square - flat	Stainless steel 304	flat	3 TSBU / 1 TSBL3	IP 23 / IP 53*
NEO + VEVV3	BDRITWD3	Blind cover - round	Stainless steel 304	26 mm		IP 53
	DRITWD3	Cover - round	Stainless steel 304	26 mm	3 TSBU / 1 TSBL3	IP 53

* non-active condition



COVERS FOR CONCRETE FLOOR, WATER RESISTANT



COVERS FOR CONCRETE FLOOR, WATER RESISTANT

BDVITWD2

Blind cover rectangular, water resistant

Max. load	2000 N (small surface area)
Max. load	3000 N (large surface area)
Non-active condition	IP 53
Depth of floor covering	Max. 26 mm
Standard finish	Stainless Steel 304



HD	Reference	mm	mm	mm	mm	kg/piece		Stock	Unit
-	BDVITWD2	-	192		267	2.250	1	✓	piece

Tested to EN 50085-2-2.

Depth of floor covering can be reduced by fitting packers OHEVB2.2 and OHEVB2.5.

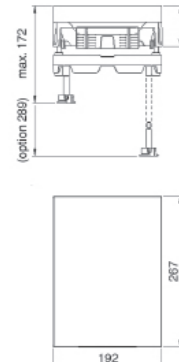
Can be leveled by adjusting 4 bolts on included alu-frame NEOT2.

Mounting without hinges.

Cover can be mounted into cover frame in 2 directions.

A reinforcement kit BDVIZ2 is available to support heavy loads.

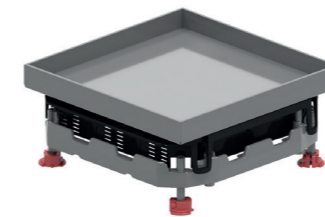
Ideal for wet areas.



BDVITWD3

Blind cover square, water resistant

Max. load	2000 N (small surface area)
Max. load	3000 N (large surface area)
Non-active condition	IP 53
Depth of floor covering	Max. 26 mm
Standard finish	Stainless Steel 304



HD	Reference	mm	mm	mm	mm	kg/piece		Stock	Unit
-	BDVITWD3	-	267		267	2.750	1	✓	piece

Tested to EN 50085-2-2.

Depth of floor covering can be reduced by fitting packers OHEVB3.2 and/or OHEVB3.5.

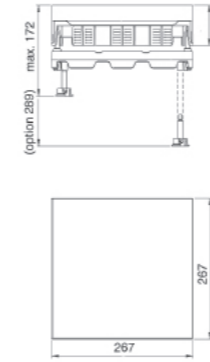
Can be leveled by adjusting 4 bolts on included alu-frame NEOT3.

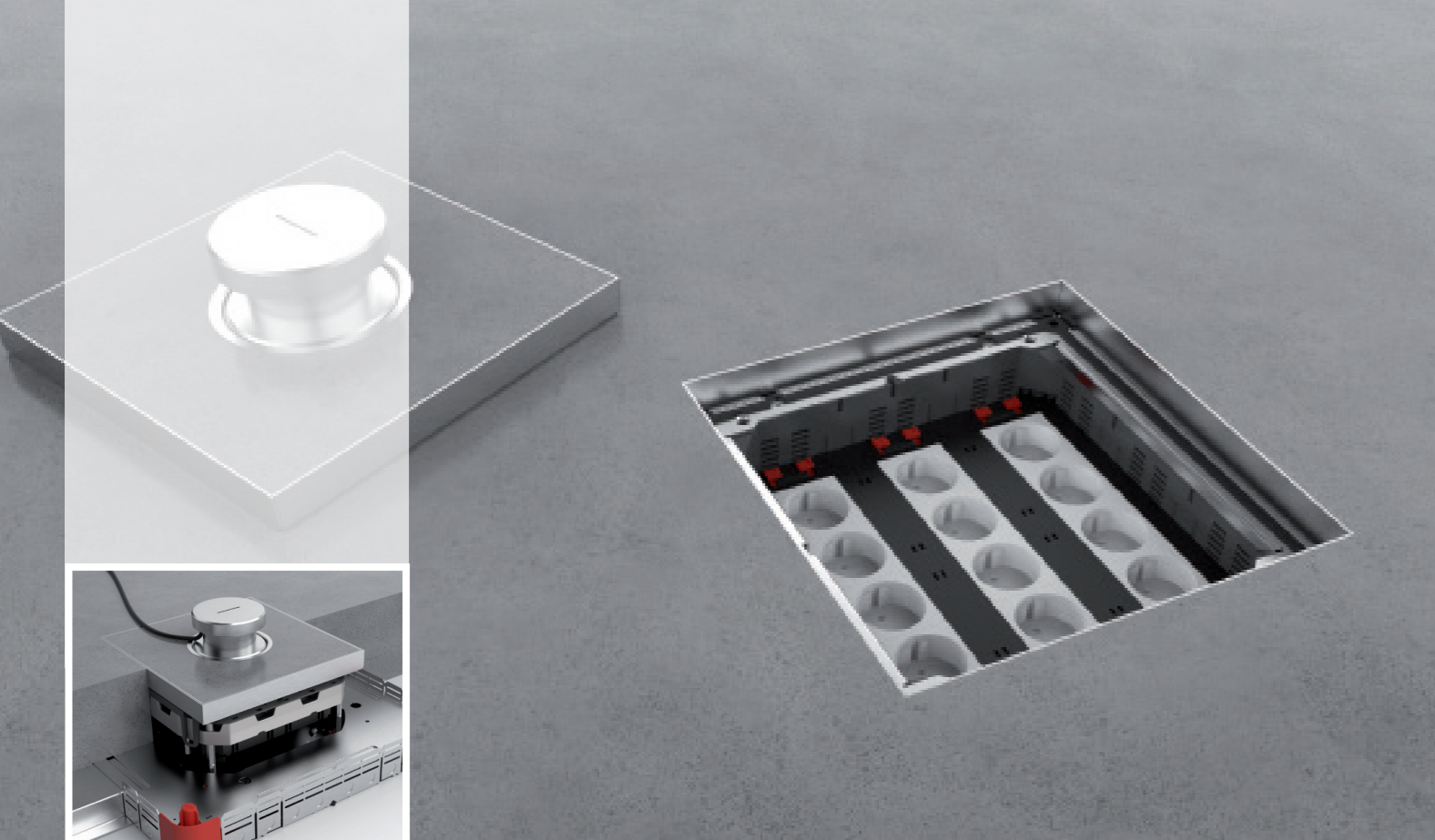
Mounting without hinges.

Cover can be mounted into cover frame in 4 directions.

A reinforcement kit is available to support heavy loads BDVIZ3.

Ideal for wet areas.





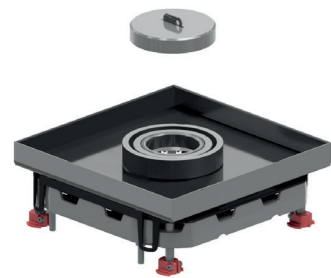
COVERS FOR CONCRETE FLOOR, WATER RESISTANT



COVERS FOR CONCRETE FLOOR, WATER RESISTANT

DVITWD3

Tile-cassette square, water resistant



Build-in frame + tileframe + water resistant cable outlet + alu frame + tube cover key	
Max. load	2000 N (small surface area)
Max. load	3000 N (large surface area)
Active condition	IP 23
Non-active condition	IP 53
Depth of floor covering	Max. 26 mm
Standard finish	Stainless Steel 304

HD	Reference	↑ mm	↔ mm	↔ mm	↔ mm	kg/piece	📦	Stock	Unit
-	DVITWD3	-	267	267	267	3.100	1	✓	piece

Tested to EN 50085-2-2.

Cover for 3 compartments.

Can be leveled by adjusting 4 bolts on included alu-frame NEOT3.

Mounting without hinges.

Cover can be mounted into cover frame in 4 directions.

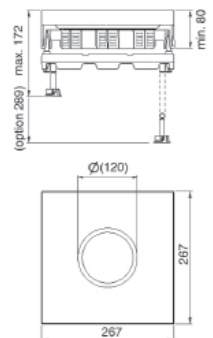
Cover is provided with a watertight cable exit and an aluminium screwcover. This can be extended with a cable exit tube (KUWDT) which guarantees watertightness when in use.

Cover is provided with an earthing strip between cover and frame.

Ideal for wet areas.



Tube cover key



DVITWDV3

Tile-cassette square flat water resistant



Build-in frame + full cover + water resistant cable outlet + alu frame + tube cover key	
Max. load	2000 N (small surface area)
Max. load	3000 N (large surface area)
Active condition	IP 23
Non-active condition	IP 53
Depth of floor covering	Flat
Standard finish	Stainless Steel 304

HD	Reference	↑ mm	↔ mm	↔ mm	↔ mm	kg/piece	📦	Stock	Unit
-	DVITWDV3	-	267	267	267	3.800	1	✓	piece

Tested to EN 50085-2-2.

Cover for 3 compartments. Flat cover filled with stainless steel.

Can be leveled by adjusting 4 bolts on included alu-frame NEOT3.

Mounting without hinges.

Cover can be mounted into cover frame in 4 directions.

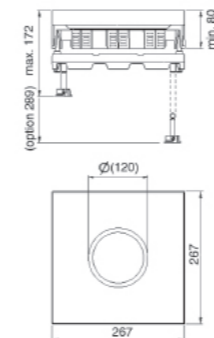
Cover is provided with a watertight cable exit and an aluminium screwcover. This can be extended with a cable exit tube (KUWDT) which guarantees watertightness when in use.

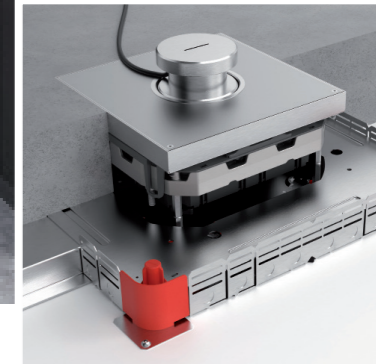
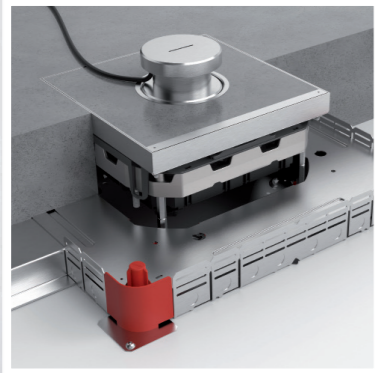
Cover is provided with an earthing strip between cover and frame.

Ideal for wet areas.



Tube cover key



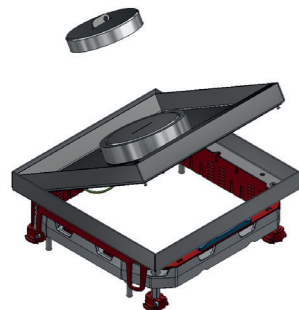


COVERS FOR CONCRETE FLOOR, WATER RESISTANT

COVERS FOR CONCRETE FLOOR, WATER RESISTANT

KDVITWD3

Hinged cover square, water resistant



Build-in frame + tileframe + water resistant cable outlet + alu frame + tube cover key	
Max. load	2000 N (small surface area)
Max. load	3000 N (large surface area)
Active condition	IP 23
Non-active condition	IP 53
Depth of floor covering	Max. 26 mm
Standard finish	Stainless Steel 304

HD	Reference	↑ mm	↔ mm	↔ mm	↔ mm	kg/piece	📦	Stock	Unit
-	KDVITWD3	-	267		267	3.800	1	✓	piece

Tested to EN 50085-2-2.

Hinged cover for 3 compartments or 1 low profile apparatus box.

Can be leveled by adjusting 4 bolts on included alu-frame NEOT3.

Cover can be mounted into cover frame in 1 direction.

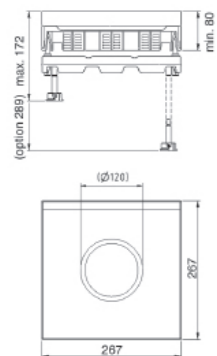
Hinged cover is provided with a watertight cable exit and an aluminium screwcover. This can be extended with a cable exit tube (KUWDT) which guarantees watertightness when in use.

Hinged cover is provided with an earthing strip between cover and frame.

Ideal for wet areas.

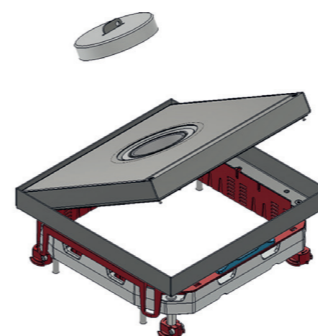


Tube cover key



KDVITWDV3

Hinged cover square flat water resistant



Build-in frame + full cover + water resistant cable outlet + alu frame + tube cover key	
Max. load	2000 N (small surface area)
Max. load	3000 N (large surface area)
Active condition	IP 23
Non-active condition	IP 53
Depth of floor covering	Flat
Standard finish	Stainless Steel 304

HD	Reference	↑ mm	↔ mm	↔ mm	↔ mm	kg/piece	📦	Stock	Unit
-	KDVITWDV3	-	267		267	3.100	1	✓	piece

Tested to EN 50085-2-2.

Hinged cover for 3 compartments or 1 low profile apparatus box. Flat cover filled with stainless steel.

Can be leveled by adjusting 4 bolts on included alu-frame NEOT3.

Cover can be mounted into cover frame in 1 direction.

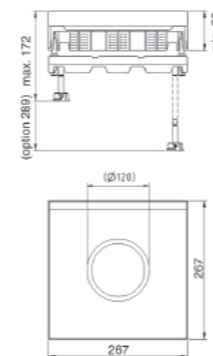
Hinged cover is provided with a watertight cable exit and an aluminium screwcover. This can be extended with a cable exit tube (KUWDT) which guarantees watertightness when in use.

Hinged cover is provided with an earthing strip between cover and frame.

Ideal for wet areas.



Tube cover key





COVERS FOR CONCRETE FLOOR, WATER RESISTANT

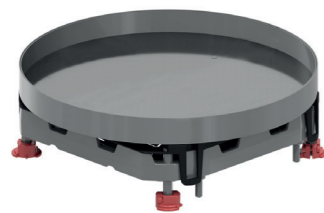


COVERS FOR CONCRETE FLOOR, WATER RESISTANT



BDRITWD3

Blind cover round, water resistant



Max. load	2000 N (small surface area)
Max. load	3000 N (large surface area)
Non-active condition	IP 53
Depth of floor covering	Max. 26 mm
Standard finish	Stainless Steel 304

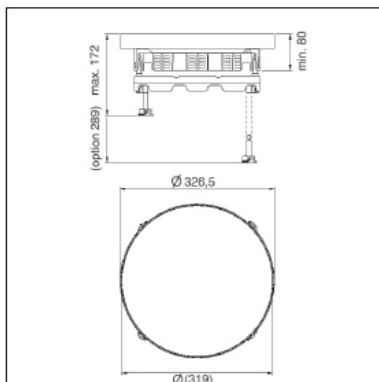
HD	Reference	mm	mm	mm	mm	kg/piece		Stock	Unit
-	BDRITWD3	-	327		327	2.825	1	✓	piece

Tested to EN 50085-2-2.

Depth of floor covering can be reduced by fitting packers OHER3.2 and/or OHER3.5.

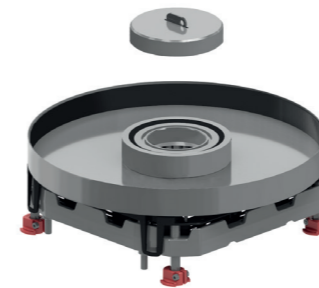
Can be leveled by adjusting 4 bolts on included alu-frame NEOT3.
Mounting without hinges.

Ideal for wet areas.



DRITWD3

Cover round, watertight cable outlet



Build-in frame + tileframe + water resistant cable outlet + alu frame + tube cover key	
Max. load	2000 N (small surface area)
Max. load	3000 N (large surface area)
Active condition	IP 23
Non-active condition	IP 53
Depth of floor covering	Max. 26 mm
Standard finish	Stainless Steel 304

HD	Reference	mm	mm	mm	mm	kg/piece		Stock	Unit
-	DRITWD3	-	327		327	3.350	1	✓	piece

Tested to EN 50085-2-2.

Cover for 3 compartment boxes.

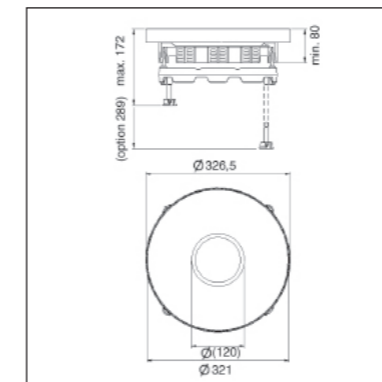
Can be leveled by adjusting 4 bolts on included alu-frame NEOT3.
Mounting without hinges.

Cover is provided with a watertight cable exit and an aluminium screwcover. This can be extended with a cable exit tube (KUWDT) which guarantees watertightness when in use.
Cover is provided with an earthing strip between cover and frame.

Ideal for wet areas.

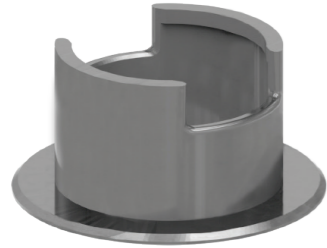


Tube cover key



KUWDT

Tube for water resistant cable exit



For water resistant covers

Standard finish Aluminium

HD	Reference	↑ mm	↔ mm	↔ mm	↔ mm	kg/piece	⊞	Stock	Unit
-	KUWDT	-	-	-	-	0.170	1	✓	piece

Tested to EN 50085-2-2.

Can be screwed into alu-ring of cover.
 The tube protects against ingress of water to a depth of 30mm.
 The tube is covered with the aluminium screw-on cover of the cover.
 This cover protects against ingress of water coming from all directions.
 When not in use, the tube can be stored underneath the aluminium ring of the cover.



4.

Covers for raised floor, not water resistant



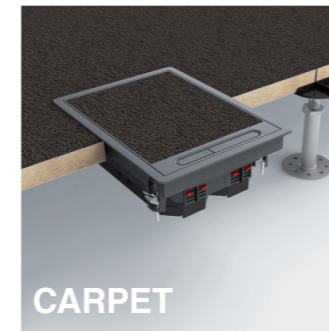
RAISED FLOOR, NOT WATER RESISTANT

CARPET | LINOLEUM | VINYL | PARQUET

For application in raised floors or floor systems, covers are used with universal pre-assembled clamps that are fixed in the floor panel. Clamping range between 30mm and 50mm.

The minimalist design of the hinged and blanking covers makes for a nice discreet unit in any interior. These covers are made of polypropylene or stainless steel. The covers can be used in areas which are exclusively dry treated.

COVERS FOR RAISED FLOOR, NOT WATER RESISTANT



CARPET



LINOLEUM



VINYL



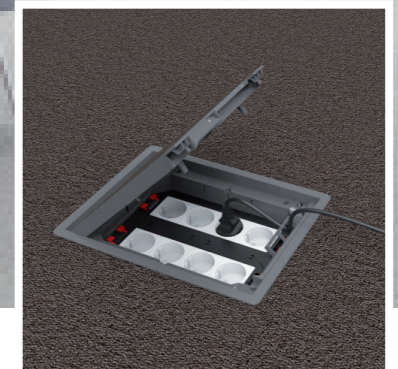
PARQUET



Code	Description	Type	Depth of cover cut-out	Compartments	To standard	Cut-aways in floor panel
BDVKK2	Blind cover - rectangular	Polypropylene	12 mm		IP 30	270 x 195 mm**
KDVKK2	Hinged cover - rectangular	Polypropylene	12 mm	2 TSBU / 1 TSBL2	IP 20 / IP 30*	270 x 195 mm**
KDVIRK2	Hinged cover - rectangular - with border	Stainless steel 304	26 mm	2 TSBU / 1 TSBL2	IP 20 / IP 30*	270 x 195 mm**
BDVKK3	Blind cover - square	Polypropylene	12 mm		IP 30	270 x 270 mm**
KDVKK3	Hinged cover - square	Polypropylene	12 mm	3 TSBU / 1 TSBL3	IP 20 / IP 30*	270 x 270 mm**
KDVIRK3	Hinged cover - square - with border	Stainless steel 304	26 mm	3 TSBU / 1 TSBL3	IP 20 / IP 30*	330 mm**
KDVIRK3V3	Hinged cover - square - flat - with border	Stainless steel 304	flat	3 TSBU / 1 TSBL3	IP 20 / IP 30*	330 mm**
BDRKK3	Blind cover - round	Polypropylene	12 mm		IP 30	270 x 270 mm**
KDRKK3	Hinged cover - round	Polypropylene	12 mm	max. 3 TSBU / 1 TSBL3	IP 20 / IP 30*	270 x 270 mm**

* non-active condition

** with a tolerance of -1 to +2mm



COVERS FOR RAISED FLOOR, NOT WATER RESISTANT

COVERS FOR RAISED FLOOR, NOT WATER RESISTANT

BDVKK2

Blind cover rectangular, universal

Color	grey RAL 7011 / Black RAL 9011
Max. load	1500 N (small surface area)
Max. load	2000 N (large surface area)
Non-active condition	IP 30
Depth of floor covering	Min. 5 mm - Max. 12 mm
Thickness steel plate	3 mm
Standard finish	Polypropylene



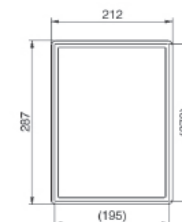
HD	Reference	↑ mm	↔ mm	↔ mm	↔ mm	kg/piece	📦	Stock	Unit
-	BDVKK2.5-7011	-	192		267	1.750	6	✓	piece
-	BDVKK2.5-9011	-	192		267	1.750	6	✓	piece

Tested to EN 50085-2-2.

Depth of floor covering is standard 5 mm and can be reduced by fitting packers OHEVB2.2 and/or OHEVB2.5.

Can be fixed through included universal clamps in raised floor panels.
 - Cut-outs in the floor panels 270x195 mm (with a tolerance of -1 mm to +2 mm).
 - Clamp range between 30 and 50 mm

For use in dry floors only.



KDVKK2

Hinged cover rectangular, universal

Build-in frame + hinged cover + cable outlet unit

Color	grey RAL 7011 / Black RAL 9011
Max. load	1500 N (small surface area)
Max. load	2000 N (large surface area)
Active condition	IP 20
Non-active condition	IP 30
Depth of floor covering	Min. 5 mm - Max. 12 mm
Thickness steel plate	3 mm
Standard finish	Polypropylene



HD	Reference	↑ mm	↔ mm	↔ mm	↔ mm	kg/piece	📦	Stock	Unit
-	KDVKK2.5-7011	-	192		267	1.650	6	✓	piece
-	KDVKK2.5-9011	-	192		267	1.650	6	✓	piece

Tested to EN 50085-2-2.

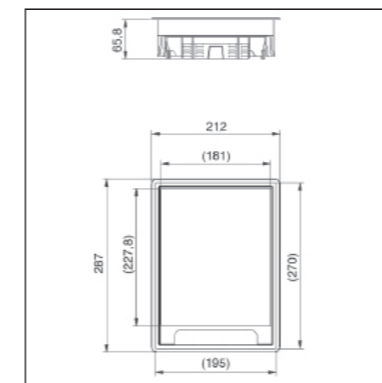
Hinged cover for 2 compartments or 1 low profile apparatus box.

Depth of floor covering is standard 5 mm and can be reduced by fitting packers OHEV2.2 and/or OHEV2.5.

Can be fixed through included universal clamps in raised floor panels.
 - Cut-outs in the floor panels 270x195 mm (with a tolerance of -1 mm to +2 mm).
 - Clamp range between 30 and 50 mm

Hinged cover is provided with 1 cable outlet with integrated push lever and cable organiser.
 Hinged cover must not be earthed.

For use in dry floors only.





COVERS FOR RAISED FLOOR, NOT WATER RESISTANT

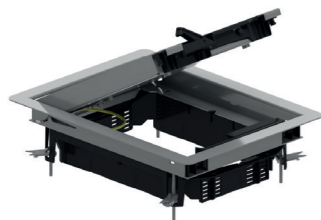


COVERS FOR RAISED FLOOR, NOT WATER RESISTANT

KDVIRK2

Hinged cover rectangular, with border

Build-in frame with border + tileframe + cable outlet	
Max. load	2000 N (small surface area)
Max. load	3000 N (large surface area)
Active condition	IP 20
Non-active condition	IP 30
Depth of floor covering	Max. 26 mm
Standard finish	Stainless Steel 304



HD	Reference	↑ mm	↔ mm	↔ mm	↔ mm	kg/piece	⊞	Stock	Unit
-	KDVIRK2	-	192		267	2.125	1	✓	piece

Tested to EN 50085-2-2.

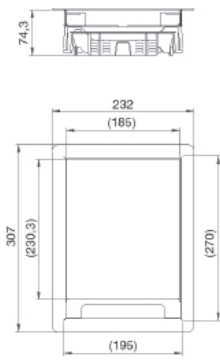
Hinged cover for 2 compartments or 1 low profile apparatus box.

Depth of floor covering can be reduced by fitting packers OHEV2.2 and/or OHEV2.5

Can be fixed through included universal clamps in raised floor panels.
 - Cut-outs in the floor panels 270x195 mm (with a tolerance of -1 mm to +2 mm).
 - clamp range between 30 and 50 mm

Hinged cover is provided with 2 cable outlets with integrated push lever and cable organiser.
 Hinged cover is provided with an earthing strip between cover and frame.

For use in dry floors only.



BDVKK3

Blind cover square, universal

Color	grey RAL 7011 / Black RAL 9011
Max. load	1500 N (small surface area)
Max. load	2000 N (large surface area)
Non-active condition	IP 30
Depth of floor covering	Min. 5 mm - Max. 12 mm
Thickness steel plate	3 mm
Standard finish	Polypropylene



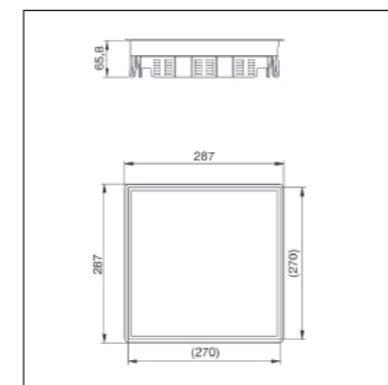
HD	Reference	↑ mm	↔ mm	↔ mm	↔ mm	kg/piece	⊞	Stock	Unit
-	BDVKK3.5-7011	-	267		267	2.300	6	✓	piece
-	BDVKK3.5-9011	-	267		267	2.300	6	✓	piece

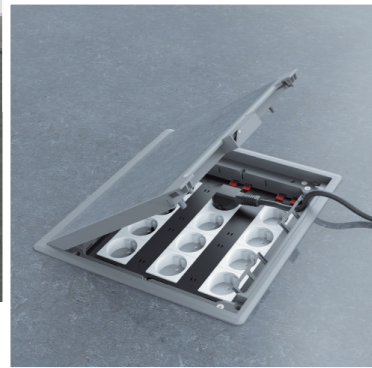
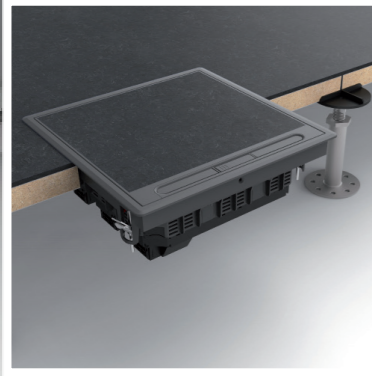
Tested to EN 50085-2-2.

Depth of floor covering is standard 5 mm and can be reduced by fitting packers OHEVB3.2 and/or OHEVB3.5.

Can be fixed through included universal clamps in raised floor panels.
 - Cut-outs in the floor panels 270x270 mm (with a tolerance of -1 mm to +2 mm).
 - Clamping range 30 to 50 mm

For use in dry floors only.





COVERS FOR RAISED FLOOR, NOT WATER RESISTANT



COVERS FOR RAISED FLOOR, NOT WATER RESISTANT



KDVKK3

Hinged cover square, universal



Build-in frame + hinged cover + cable outlet unit	
Color	grey RAL 7011 / Black RAL 9011
Max. load	1500 N (small surface area)
Max. load	2000 N (large surface area)
Active condition	IP 20
Non-active condition	IP 30
Depth of floor covering	Min. 5 mm - Max. 12 mm
Thickness steel plate	3 mm
Standard finish	Polypropylene

HD	Reference	↑ mm	↔ mm	↔ mm	↔ mm	kg/piece	📦	Stock	Unit
-	KDVKK3.5-7011	-	267		267	2.200	6	✓	piece
-	KDVKK3.5-9011	-	267		267	2.200	6	✓	piece

Tested to EN 50085-2-2.

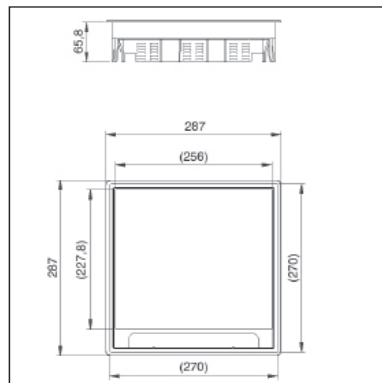
Hinged cover for 3 compartments or 1 low profile apparatus box.

Depth of floor covering is standard 5 mm and can be reduced by fitting packers OHEV3.2 and/or OHEV3.5.

Can be fixed through included universal clamps in raised floor panels.
 - Cut-outs in the floor panels 270x270 mm (with a tolerance of -1 mm to +2 mm).
 - Clamping range 30 to 50 mm

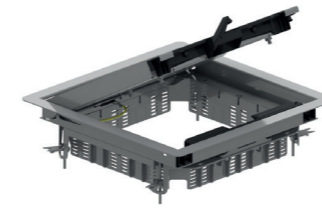
Hinged cover is provided with 2 cable outlets with integrated push lever and cable organiser.
 Hinged cover must not be earthed.

For use in dry floors only.



KDVIRK3

Hinged cover square, with border



Build-in frame with border + tileframe + cable outlet	
Max. load	2000 N (small surface area)
Max. load	3000 N (large surface area)
Active condition	IP 20
Non-active condition	IP 30
Depth of floor covering	Max. 26 mm
Standard finish	Stainless Steel 304

HD	Reference	↑ mm	↔ mm	↔ mm	↔ mm	kg/piece	📦	Stock	Unit
-	KDVIRK3	-	267		267	2.675	1	✓	piece

Tested to EN 50085-2-2.

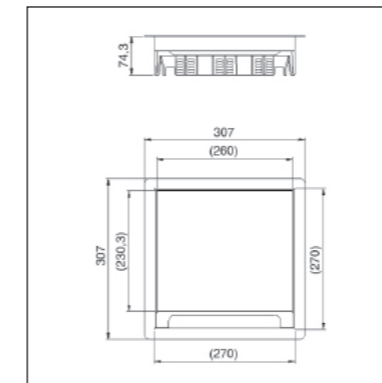
Hinged cover for 3 compartments or 1 low profile apparatus box.

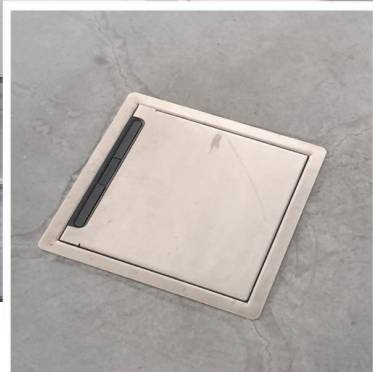
Depth of floor covering can be reduced by fitting packers OHEV3.2 and/or OHEV3.5

Can be fixed through included universal clamps in raised floor panels.
 - Cut-outs in the floor panels 270x270 mm (with a tolerance of -1 mm to +2 mm).
 - Clamp range between 30 and 50 mm

Hinged cover is provided with 2 cable outlets with integrated push lever and cable organiser.
 Hinged cover is provided with an earthing strip between cover and frame.

For use in dry floors only.





COVERS FOR RAISED FLOOR, NOT WATER RESISTANT



COVERS FOR RAISED FLOOR, NOT WATER RESISTANT

KDVIRK3

Hinged cover square flat, with border



Build-in frame with border + full cover + cable outlet	
Max. load	2000 N (small surface area)
Max. load	3000 N (large surface area)
Active condition	IP 20
Non-active condition	IP 30
Depth of floor covering	flat
Standard finish	Stainless Steel 304

HD	Reference	↑ mm	↔ mm	↔ mm	↔ mm	kg/piece	⊞	Stock	Unit
-	KDVIRK3	-	267		267	2.675	1	✓	piece

Tested to EN 50085-2-2.

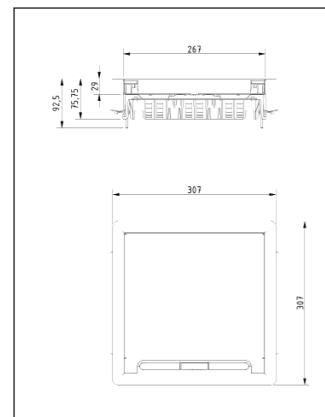
Hinged cover for 3 compartments or 1 low profile apparatus box. Flat cover filled with stainless steel.

Can be fixed through included universal clamps in screed floor.

Hinged cover is provided with 2 cable outlets with integrated push lever and 2 cable organisers. Hinged cover is provided with an earthing strip between cover and frame.

Extra advantage compared to KDVIRK3: it can be used in floors where it's not possible or recommended to fill the cover with the same material as the floor.

For use in dry floors only.



BDRKK3

Blind cover round, universal



Color	grey RAL 7011 / Black RAL 9011
Max. load	1500 N (small surface area)
Max. load	2000 N (large surface area)
Non-active condition	IP 30
Depth of floor covering	Min. 5 mm - Max. 12 mm
Thickness steel plate	3 mm
Standard finish	Polypropylene

HD	Reference	↑ mm	↔ mm	↔ mm	↔ mm	kg/piece	⊞	Stock	Unit
-	BDRKK3.5-7011	-	327		327	2.400	6	✓	piece
-	BDRKK3.5-9011	-	327		327	2.400	6		piece

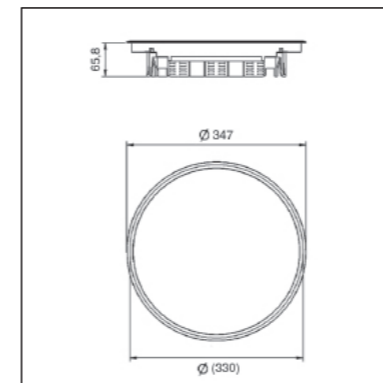
Tested to EN 50085-2-2.

Depth of floor covering is standard 5 mm and can be reduced by fitting packers OHER3.2 and/or OHER3.5.

Can be fixed through included universal clamps in raised floor panels.

- Cut-outs in the floor panels diameter 330 mm (with a tolerance of -1 mm to +2 mm).
- Clamp range between 30 and 50 mm.

For use in dry floors only.

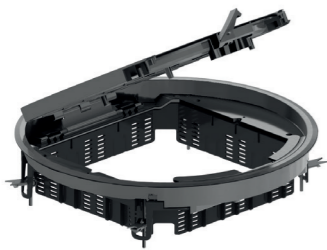




COVERS FOR RAISED FLOOR, NOT WATER RESISTANT

KDRKK3

Hinged cover round, universal



Build-in frame + hinged cover + cable outlet unit	
Color	grey RAL 7011 / Black RAL 9011
Max. load	1500 N (small surface area)
Max. load	2000 N (large surface area)
Active condition	IP 20
Non-active condition	IP 30
Depth of floor covering	Min. 5 mm - Max. 12 mm
Thickness steel plate	3 mm
Standard finish	Polypropylene

HD	Reference	↑ mm	↔ mm	↔ mm	↔ mm	kg/piece	📦	Stock	Unit
-	KDRKK3.5-7011	-	327		327	2.450	6	✓	piece
-	KDRKK3.5-9011	-	327		327	2.450	6	✓	piece

Tested to EN 50085-2-2.

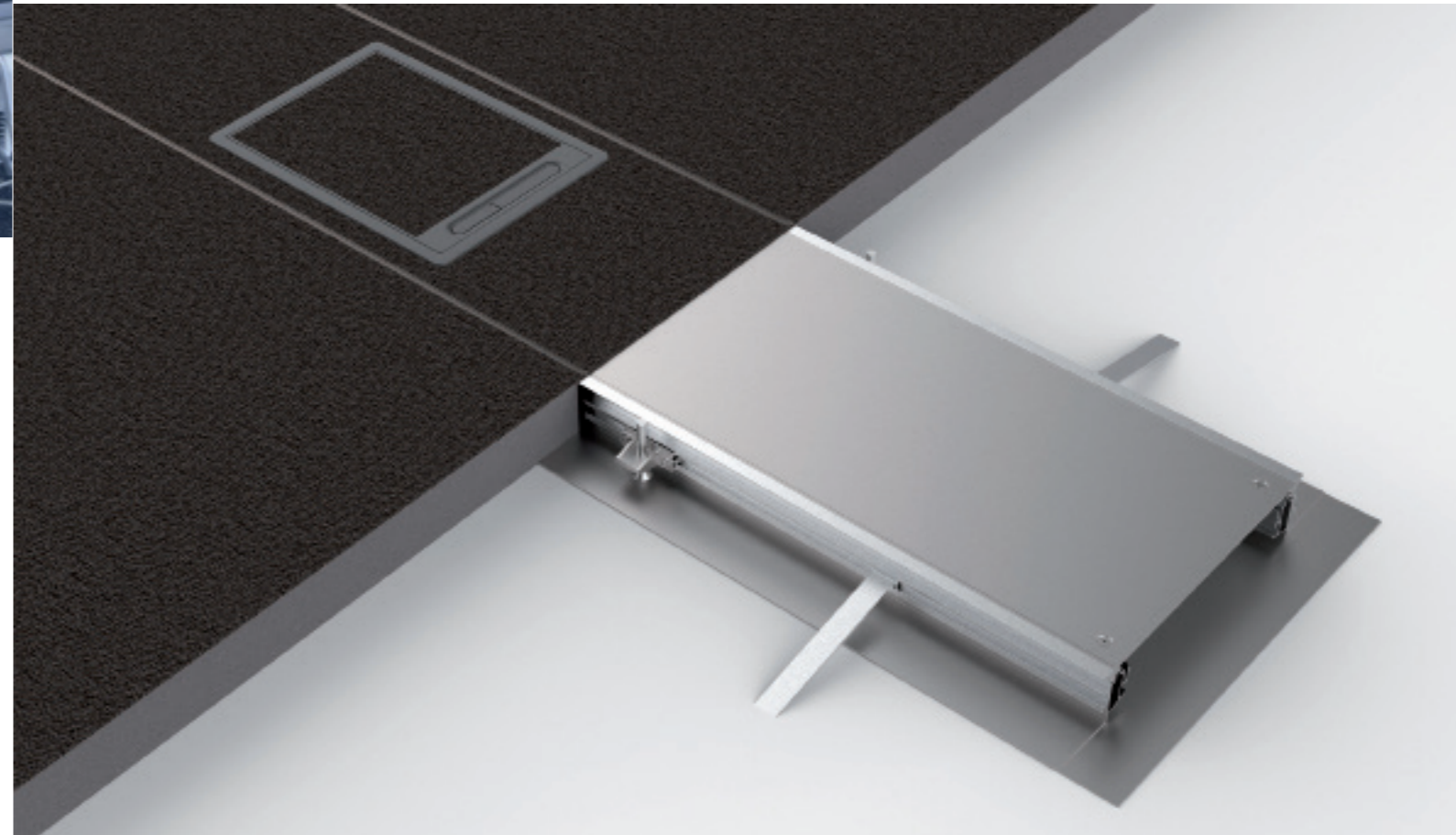
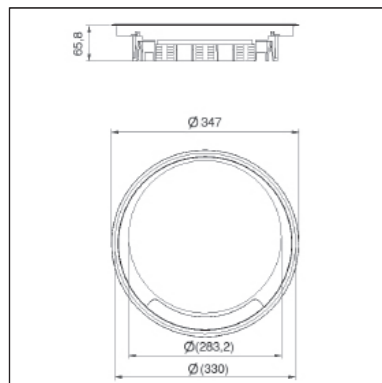
Hinged cover for 3 compartments or 1 low profile apparatus box.

Depth of floor covering is standard 5 mm and can be reduced by fitting packers OHER3.2 and/or OHER3.5.

Can be fixed through included universal clamps in raised floor panels.
 - Cut-outs in the floor panels diameter 330 mm (with a tolerance of -1 mm to +2 mm).
 - Clamp range between 30 and 50 mm

Hinged cover is provided with 2 cable outlets with integrated push lever and cable organiser.
 Hinged cover must not be earthed.

For use in dry floors only.



Flush floor trunking system



FLUSH FLOOR TRUNKING, NOT WATER RESISTANT CARPET | LINOLEUM | VINYL

The OVG open floor trunkings lie flush with the screed. These trunking systems can be opened along their entire length, making them ideal for regular changes to the cables laid. The covers are mounted directly in the trunking.

The levelling range is from 55mm to 110mm. Hinged covers can be mounted from a levelling height of 70mm.

FLUSH FLOOR TRUNKING SYSTEM

OVG

Open flush floor trunking

Ideal for frequent addition or removal of cables. For both new constructions and renovations.

To order till height 150 mm



HD	Reference	↑ mm	↔ mm	↔ mm	↔ mm	kg/m	⊞	Stock	Unit
-	OVG250.3	-	250		2400	9.406	24	✓	m
-	OVG350.3	-	350		2400	11.986	24	✓	m
-	OVG450.4	-	450		2400	19.228	24	✓	m

The technical information for this product can be found at the end of this chapter.

Tested according EN 50085-2-2.

- Used in screeded floors to be finished with carpet or vinyl.
- Levelling range: 55 to 110 mm.
- Hinged covers can be mounted from levelling height 70 mm.
- Universal side for all levelling heights.
- Straightforward assembly of accessories with plastic corner connector.

Each flush floor trunking comes standard with the following products:

- 2 Extrusion profile (OVGP)
- 2 Universal sides (OVGZ)
- 3 Cross bars (OVGTR)
- 2 Carpet borders (OVGTAP)*
- 3 Sealed covers (DOVG)
- 6 Levelling pieces
- 16 Taperedhead metal screws (ST48x23)
- 6 Screed anchor (OVGAN)
- 12 Tapered head bolts (BZ5.16)
- 6 Levelling screws
- 2 Baseplates (OVGVST)

* Gauge of OVG TAP depends on the gauge of the cover.

OVGBP

Bottom plate



Standard finish

Pre-galvanised

HD	Reference	↑ mm	↔ mm	↔ mm	↔ mm	kg/piece	⊞	Stock	Unit
-	OVGBP250	-	380		1250	2.775	10	✓	piece
-	OVGBP350	-	480		1250	3.506	10	✓	piece
-	OVGBP450	-	580		1250	4.238	10	✓	piece

To order per full packaging.

DOVG

Cover for flush floor trunking

Standard finish		Pre-galvanised								
HD	Reference	↑ mm	↔ mm	↔ mm	↔ mm	↔ mm	kg/piece	⊞	Stock	Unit
-	DOVG250.3	-	250	3.00	800		4.725	1		piece
-	DOVG350.3	-	350	3.00	800		6.603	1		piece
-	DOVG450.4	-	450	4.00	800		12.218	1		piece

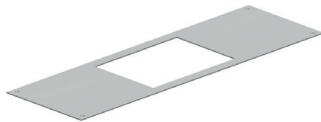


DOVGV.2

Cover for flush floor trunking

For hinged cover KDVKK2 and KDVIK2.

Standard finish		Pre-galvanised								
HD	Reference	↑ mm	↔ mm	↔ mm	↔ mm	↔ mm	kg/piece	⊞	Stock	Unit
-	DOVGV250.3.2	-	250	3.00	800		3.313	1		piece



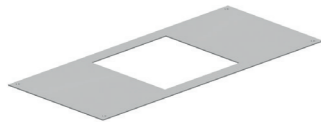
Replace the clamps of the hinged cover by the enclosed clamps of the DOVG. Replace the cover where you want to mount the flush mounting unit with a cover for the relevant flush mounting unit. Place the flush mounting unit in the opening provided. Fasten the flush mounting unit by tightening the clamps.

DOVGV.3

Cover for flush floor trunking

For hinged cover KDVKK3 and KDVIK3.

Standard finish		Pre-galvanised								
HD	Reference	↑ mm	↔ mm	↔ mm	↔ mm	↔ mm	kg/piece	⊞	Stock	Unit
-	DOVGV350.3.3	-	350	3.00	800		4.783	1		piece
-	DOVGV450.4.3	-	450	4.00	800		8.843	1		piece



Replace the clamps of the hinged cover by the enclosed clamps of the DOVG. Replace the cover where you want to mount the flush mounting unit with a cover for the relevant flush mounting unit. Place the flush mounting unit in the opening provided. Fasten the flush mounting unit by tightening the clamps.

DOVGR.3

Cover for flush floor trunking

For hinged cover KDRKK3.

Standard finish		Pre-galvanised								
HD	Reference	↑ mm	↔ mm	↔ mm	↔ mm	↔ mm	kg/piece	⊞	Stock	Unit
-	DOVGR450.4.3	-	450	4.00	800		9.450	1		piece



Replace the clamps of the hinged cover by the enclosed clamps of the DOVG. Replace the cover where you want to mount the flush mounting unit with a cover for the relevant flush mounting unit. Place the flush mounting unit in the opening provided. Fasten the flush mounting unit by tightening the clamps.

OVGB

Bend for flush floor trunking

Connection angle (OVGHV) + end part (OVGE) + crossbar + 2 earth conductors (OVGEQ - OVGEQH).

HD	Reference	↑ mm	↔ mm	↔ mm	↔ mm	↔ mm	kg/piece	⊞	Stock	Unit
-	OVGB250.3	-	250				1.011	1	✓	piece
-	OVGB350.3	-	350				1.307	1	✓	piece
-	OVGB450.4	-	450				1.661	1	✓	piece



The technical information for this product can be found at the end of this chapter.

OVGT

T-piece for flush floor trunking

2 connection angles (OVGHV) + crossbar + 2 earth conductor clamps (OVGEQH)

HD	Reference	↑ mm	↔ mm	↔ mm	↔ mm	↔ mm	kg/piece	⊞	Stock	Unit
-	OVGT250.3	-	250				0.466	1	✓	piece
-	OVGT350.3	-	350				0.799	1	✓	piece
-	OVGT450.4	-	450				1.073	1	✓	piece

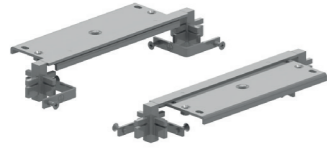


The technical information for this product can be found at the end of this chapter.

OVGK

Cross piece for flush floor trunking

4 connection angles (OVGHV) + 2 crossbars + 4 earth conductor clamps (OVGEQH)



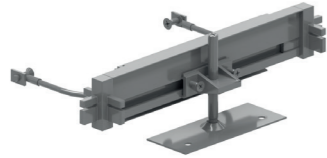
HD	Reference	↑ mm	↔ mm	↔ mm	↔ mm	kg/piece	⊞	Stock	Unit
-	OVGK250.3	-	250			1.166	1	✓	piece
-	OVGK350.3	-	350			1.598	1	✓	piece
-	OVGK450.4	-	450			2.146	1	✓	piece

The technical information for this product can be found at the end of this chapter.

OVGE

End part for flush floor trunking

2 connection angles (OVGHV) + end part + bottom (OVGVST) + 2 earthing straps.

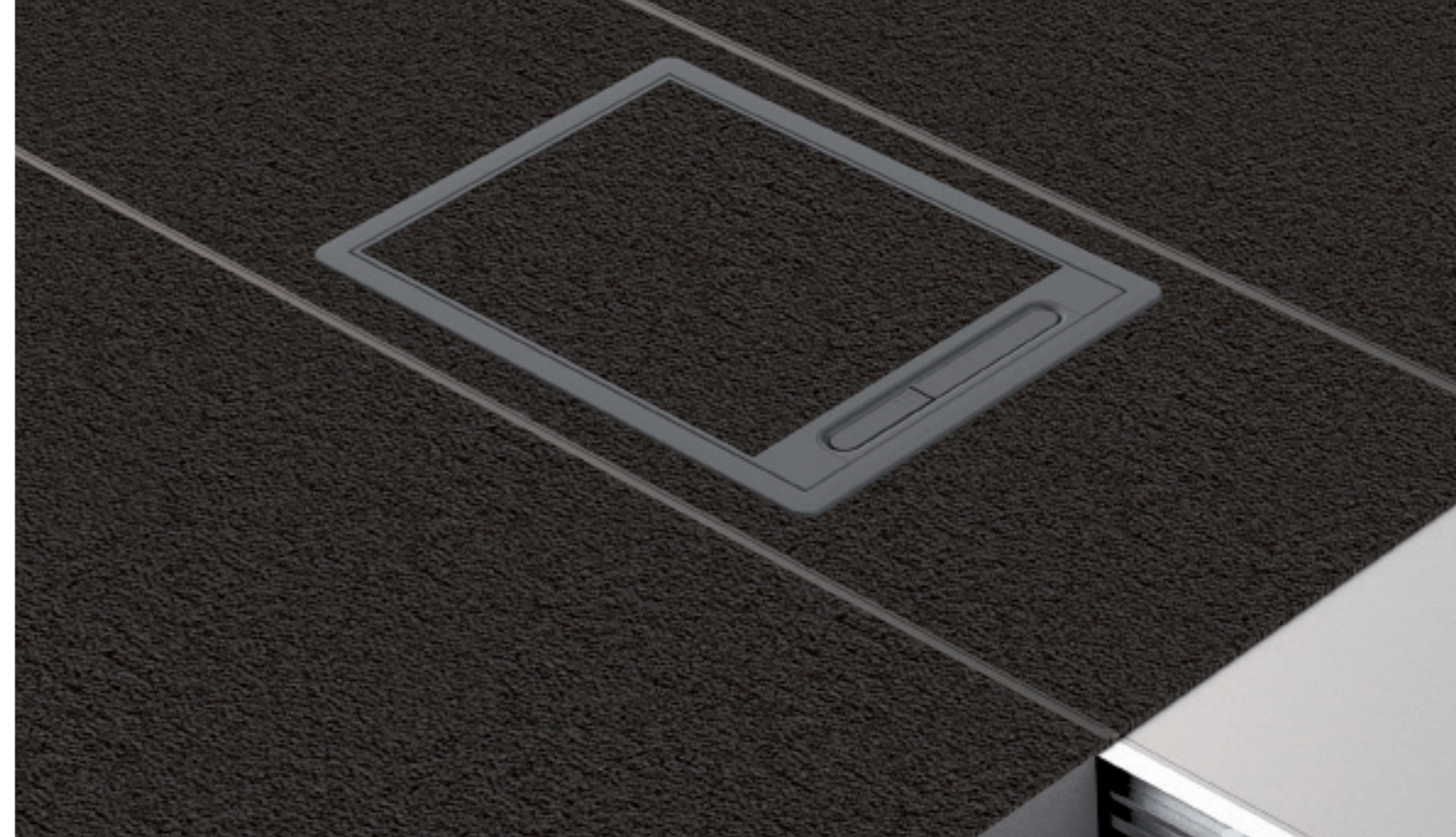


HD	Reference	↑ mm	↔ mm	↔ mm	↔ mm	kg/piece	⊞	Stock	Unit
-	OVGE250.3	-	250			0.438	1	✓	piece
-	OVGE350.3	-	350			0.518	1	✓	piece
-	OVGE450.4	-	450			0.598	1	✓	piece

The technical information for this product can be found at the end of this chapter.

For sealing the end of your open flush floor trunking.

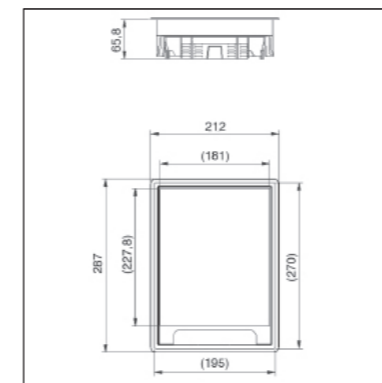
These are slide into the conduit using the 2 plastic corner connectors. Level it so that the unit is properly supported. Connect the earthing cables.



FLUSH FLOOR TRUNKING SYSTEM

KDVKK2

Hinged cover rectangular, universal



Build-in frame + hinged cover + cable outlet unit

Color	grey RAL 7011 / Black RAL 9011
Max. load	1500 N (small surface area)
Max. load	2000 N (large surface area)
Active condition	IP 20
Non-active condition	IP 30
Depth of floor covering	Min. 5 mm - Max. 12 mm
Thickness steel plate	3 mm
Standard finish	Polypropylene

HD	Reference	↑ mm	↔ mm	↔ mm	↔ mm	kg/piece	⊞	Stock	Unit
-	KDVKK2.5-7011	-	192		267	1.650	6	✓	piece
-	KDVKK2.5-9011	-	192		267	1.650	6	✓	piece

Tested to EN 50085-2-2.

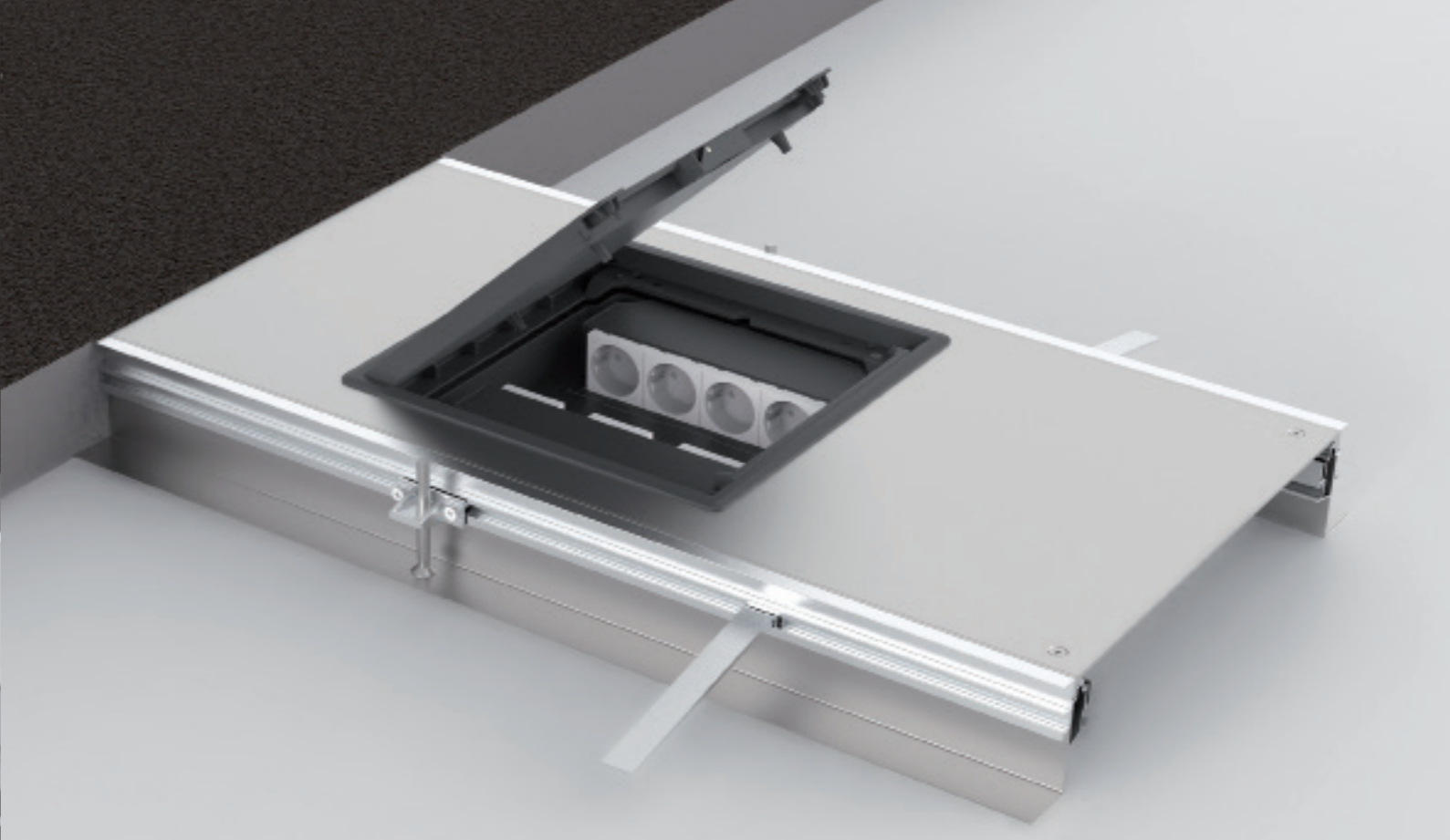
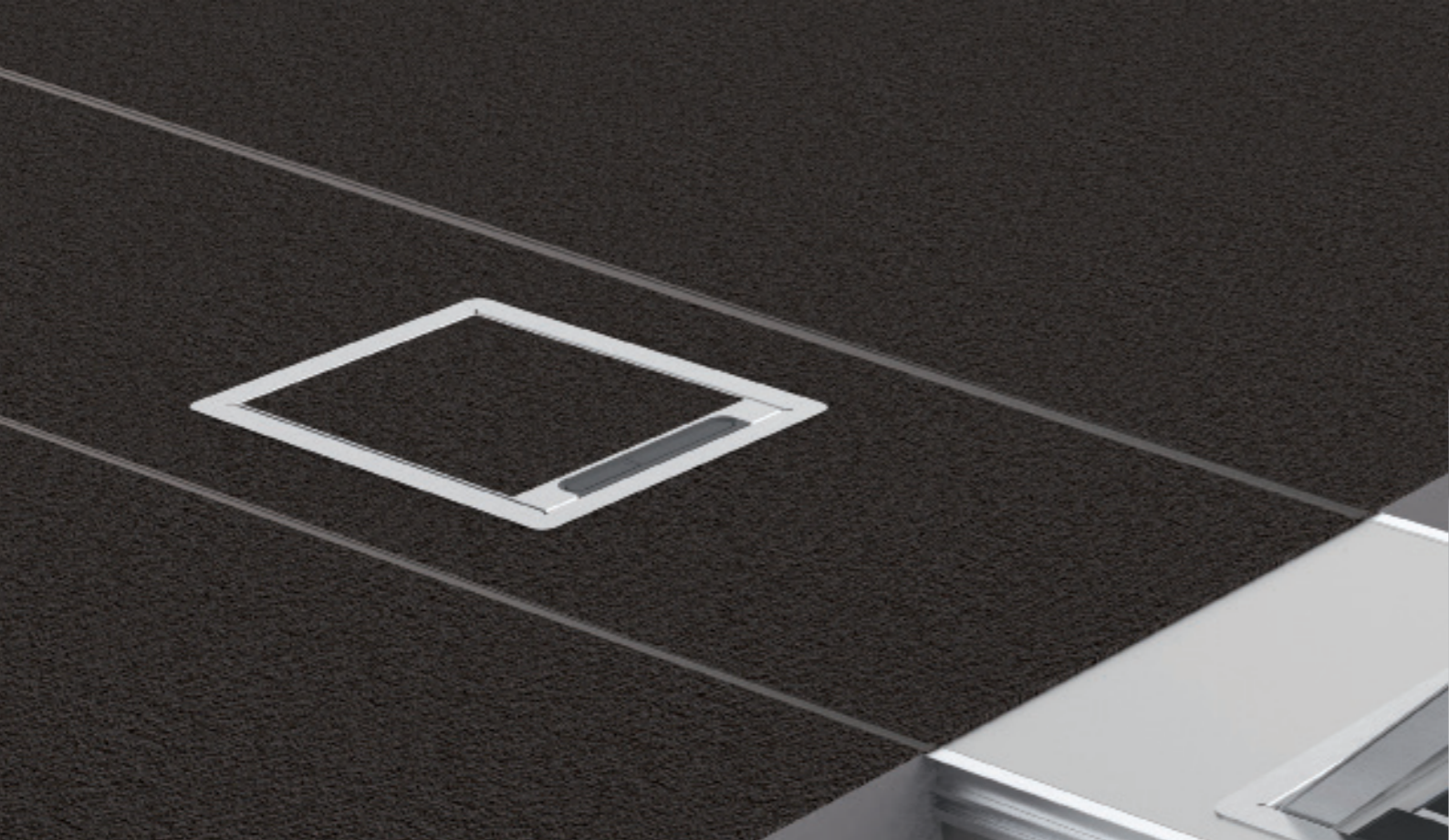
Hinged cover for 2 compartments or 1 low profile apparatus box.

Depth of floor covering is standard 5 mm and can be reduced by fitting packers OHEV2.2 and/or OHEV2.5.

Replace the clamps of the hinged cover by the enclosed clamps of the DOVG.

Hinged cover is provided with 1 cable outlet with integrated push lever and cable organiser. Hinged cover must not be earthed.

For use in dry floors only.



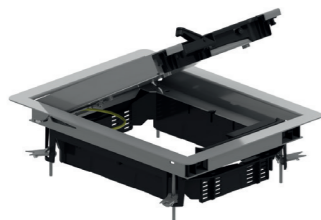
FLUSH FLOOR TRUNKING SYSTEM

FLUSH FLOOR TRUNKING SYSTEM

KDVIRK2

Hinged cover rectangular, with border

Build-in frame with border + tileframe + cable outlet	
Max. load	2000 N (small surface area)
Max. load	3000 N (large surface area)
Active condition	IP 20
Non-active condition	IP 30
Depth of floor covering	Max. 26 mm
Standard finish	Stainless Steel 304



HD	Reference	↑ mm	↔ mm	↔ mm	↔ mm	kg/piece	📦	Stock	Unit
-	KDVIRK2	-	192		267	2.125	1	✓	piece

Tested to EN 50085-2-2.

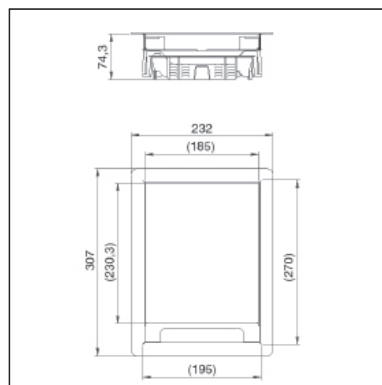
Hinged cover for 2 compartments or 1 low profile apparatus box.

Depth of floor covering can be reduced by fitting packers OHEV2.2 and/or OHEV2.5

Replace the clamps of the hinged cover by the enclosed clamps of the DOVG.

Hinged cover is provided with 2 cable outlets with integrated push lever and cable organiser.
Hinged cover is provided with an earthing strip between cover and frame.

For use in dry floors only.



KDVKK3

Hinged cover square, universal

Build-in frame + hinged cover + cable outlet unit	
Color	grey RAL 7011 / Black RAL 9011
Max. load	1500 N (small surface area)
Max. load	2000 N (large surface area)
Active condition	IP 20
Non-active condition	IP 30
Depth of floor covering	Min. 5 mm - Max. 12 mm
Thickness steel plate	3 mm
Standard finish	Polypropylene



HD	Reference	↑ mm	↔ mm	↔ mm	↔ mm	kg/piece	📦	Stock	Unit
-	KDVKK3.5-7011	-	267		267	2.200	6	✓	piece
-	KDVKK3.5-9011	-	267		267	2.200	6	✓	piece

Tested to EN 50085-2-2.

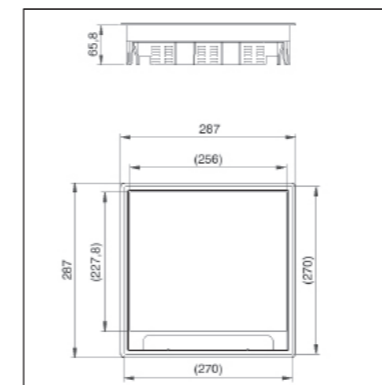
Hinged cover for 3 compartments or 1 low profile apparatus box.

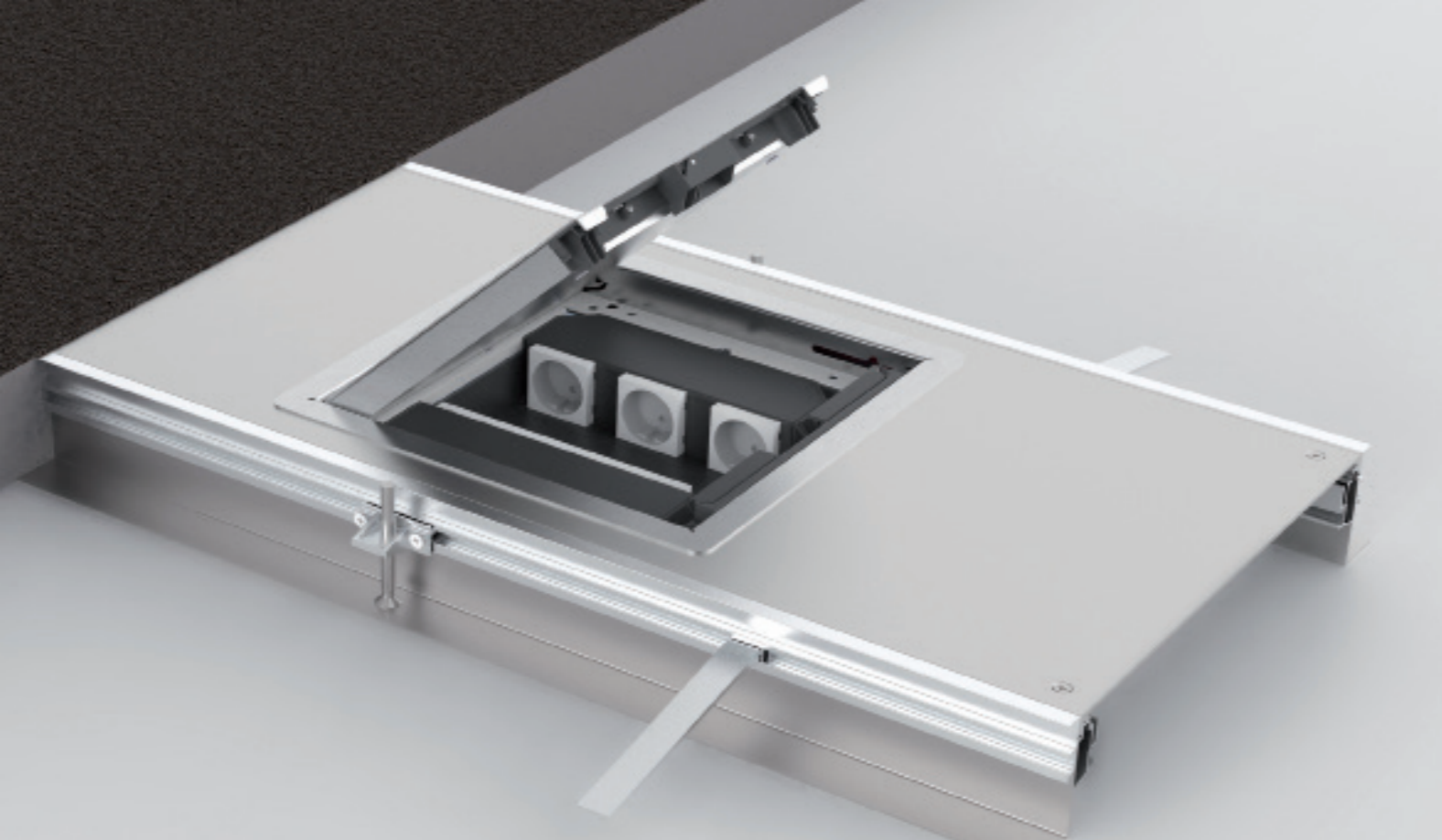
Depth of floor covering is standard 5 mm and can be reduced by fitting packers OHEV3.2 and/or OHEV3.5.

Replace the clamps of the hinged cover by the enclosed clamps of the DOVG.

Hinged cover is provided with 2 cable outlets with integrated push lever and cable organiser.
Hinged cover must not be earthed.

For use in dry floors only.

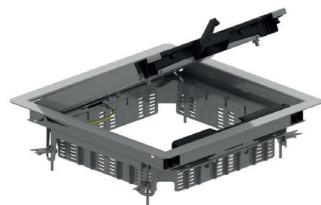




FLUSH FLOOR TRUNKING SYSTEM

KDVIRK3

Hinged cover square, with border



Build-in frame with border + tileframe + cable outlet	
Max. load	2000 N (small surface area)
Max. load	3000 N (large surface area)
Active condition	IP 20
Non-active condition	IP 30
Depth of floor covering	Max. 26 mm
Standard finish	Stainless Steel 304

HD	Reference	↑ mm	↔ mm	↔ mm	↔ mm	kg/piece	📦	Stock	Unit
-	KDVIRK3	-	267	267	267	2.675	1	✓	piece

Tested to EN 50085-2-2.

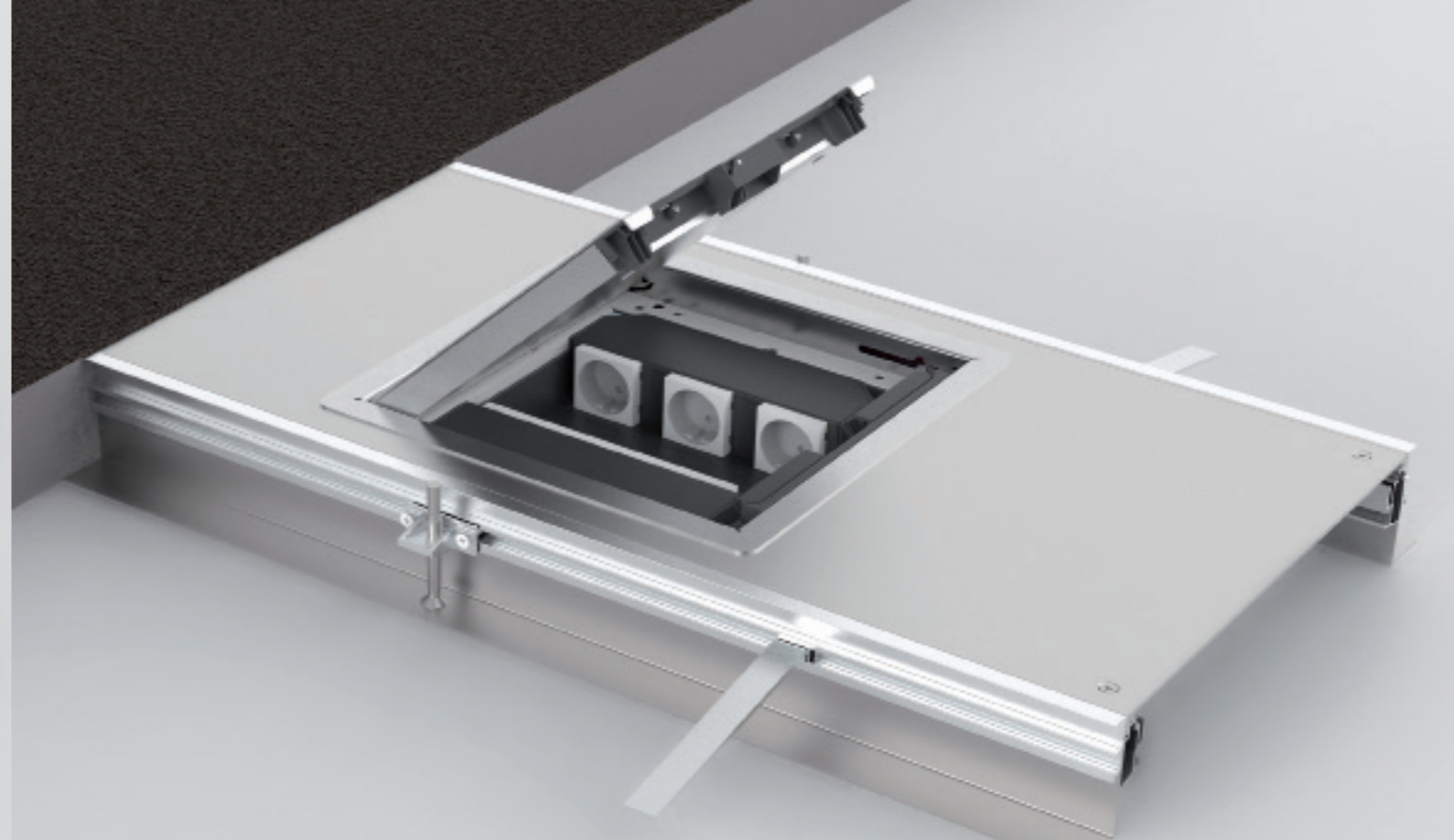
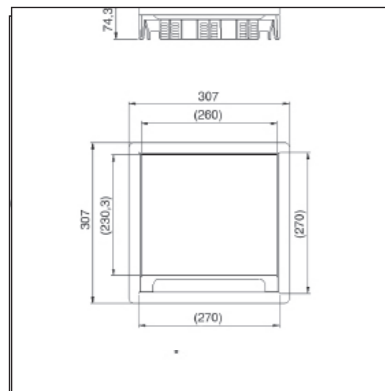
Hinged cover for 3 compartments or 1 low profile apparatus box.

Depth of floor covering can be reduced by fitting packers OHEV3.2 and/or OHEV3.5

Replace the clamps of the hinged cover by the enclosed clamps of the DOVG.

Hinged cover is provided with 2 cable outlets with integrated push lever and cable organiser.
Hinged cover is provided with an earthing strip between cover and frame.

For use in dry floors only.



FLUSH FLOOR TRUNKING SYSTEM

KDVIRKV3

Hinged cover square flat, with border



Build-in frame with border + full cover + cable outlet	
Max. load	2000 N (small surface area)
Max. load	3000 N (large surface area)
Active condition	IP 20
Non-active condition	IP 30
Depth of floor covering	flat
Standard finish	Stainless Steel 304

HD	Reference	↑ mm	↔ mm	↔ mm	↔ mm	kg/piece	📦	Stock	Unit
-	KDVIRKV3	-	267	267	267	2.675	1	✓	piece

Tested to EN 50085-2-2.

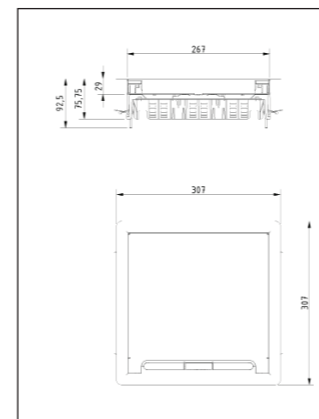
Hinged cover for 3 compartments or 1 low profile apparatus box. Flat cover filled with stainless steel.

Can be fixed through included universal clamps in screed floor.

Hinged cover is provided with 2 cable outlets with integrated push lever and 2 cable organisers.
Hinged cover is provided with an earthing strip between cover and frame.

Extra advantage compared to KDVIK3: it can be used in floors where it's not possible or recommended to fill the cover with the same material as the floor.

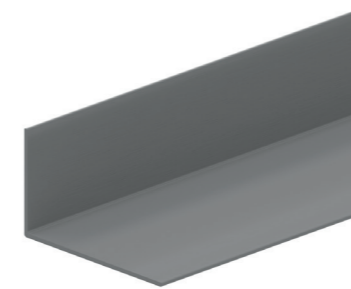
For use in dry floors only.



FLUSH FLOOR TRUNKING SYSTEM

OVGZ

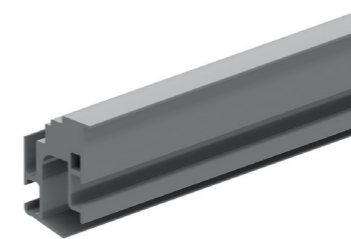
Universal side for flush floor trunking



Color	Black RAL 9011								
Standard finish	Polyvinyl chloride								
HD	Reference	↑ mm	↔ mm	↔ mm	↔ mm	kg/m	⊠	Stock	Unit
-	OVGZ	-				2400	0.370	24	m

OVGP

Extrusion profile flush floor trunking



Standard finish	Aluminium								
HD	Reference	↑ mm	↔ mm	↔ mm	↔ mm	kg/m	⊠	Stock	Unit
-	OVGP4	-				2400	0.803	24	m

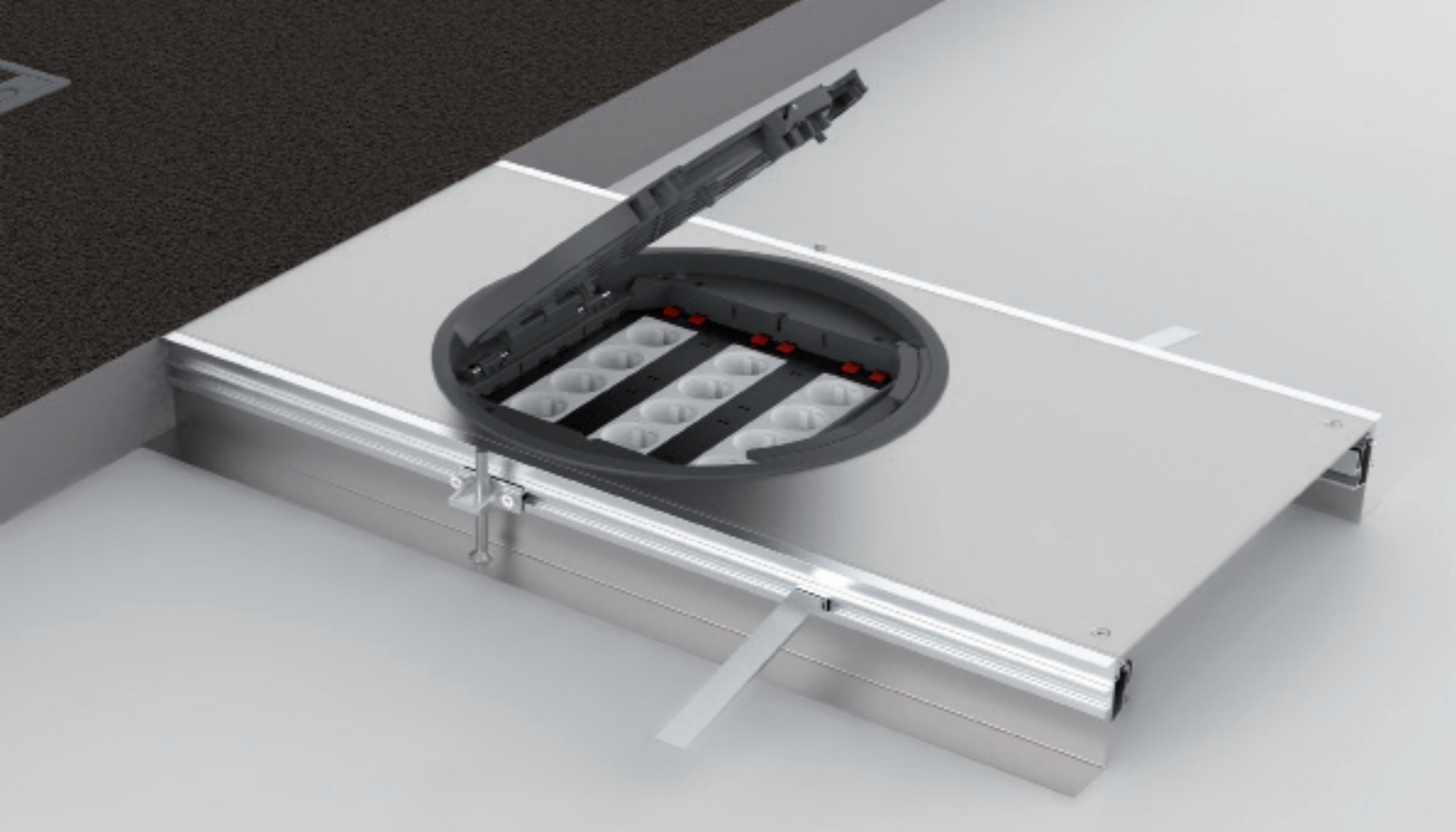
OVGTR

Crossbar for flush floor trunking



Additional support to mount the covers.									
Standard finish	Pre-galvanised								
HD	Reference	↑ mm	↔ mm	↔ mm	↔ mm	kg/piece	⊠	Stock	Unit
-	OVGTR250	-	250			0.430	10		piece
-	OVGTR350	-	350			0.616	10		piece
-	OVGTR450	-	450			0.804	10		piece

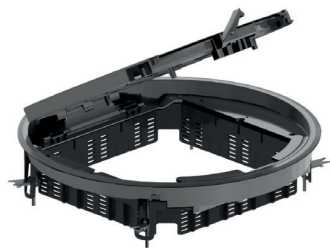
To order per full packaging.



FLUSH FLOOR TRUNKING SYSTEM

KDRKK3

Hinged cover round, universal



Build-in frame + hinged cover + cable outlet unit	
Color	grey RAL 7011 / Black RAL 9011
Max. load	1500 N (small surface area)
Max. load	2000 N (large surface area)
Active condition	IP 20
Non-active condition	IP 30
Depth of floor covering	Min. 5 mm - Max. 12 mm
Thickness steel plate	3 mm
Standard finish	Polypropylene

HD	Reference	↑ mm	↔ mm	↔ mm	↔ mm	kg/piece	⊠	Stock	Unit
-	KDRKK3.5-7011	-	327		327	2.450	6	✓	piece
-	KDRKK3.5-9011	-	327		327	2.450	6	✓	piece

Tested to EN 50085-2-2.

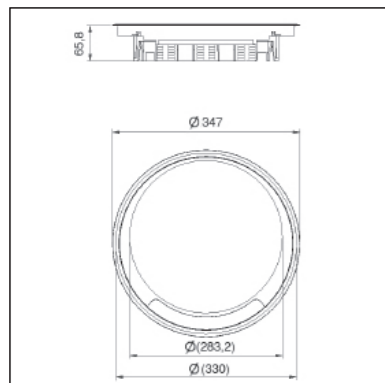
Hinged cover for 3 compartments or 1 low profile apparatus box.

Depth of floor covering is standard 5 mm and can be reduced by fitting packers OHER3.2 and/or OHER3.5.

Replace the clamps of the hinged cover by the enclosed clamps of the DOVG.

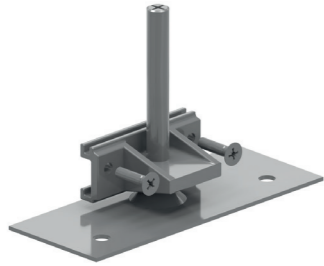
Hinged cover is provided with 2 cable outlets with integrated push lever and cable organiser. Hinged cover must not be earthed.

For use in dry floors only.



OVGVST

Bottom for flush floor trunking



HD	Reference	↑ mm	↔ mm	↔ mm	↔ mm	kg/piece	⊞	Stock	Unit
-	OVGVST	-				0.110	12		piece

To order per full packaging.

OVGAN

Screed anchor for flush floor trunking



Color		black RAL 9011							
Standard finish		Polypropylene							
HD	Reference	↑ mm	↔ mm	↔ mm	↔ mm	kg/piece	⊞	Stock	Unit
-	OVGAN	-				0.010	50		piece

OVGTAP

Carpet border for flush floor trunking

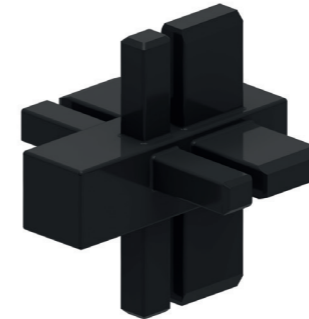


Color		Black RAL 9011							
Standard finish		Polyvinyl chloride							
HD	Reference	↑ mm	↔ mm	↔ mm	↔ mm	kg/m	⊞	Stock	Unit
-	OVGTAP3	-				2400	0.090	24	m
-	OVGTAP4	-				2400	0.084	24	m

OVGTAP3 for OVG250.3 and OVG350.3.
OVGTAP4 for OVG450.4.

OVGHV

Connection angle for flush trunking



Color		Black RAL 9011							
Standard finish		Polypropylene							
HD	Reference	↑ mm	↔ mm	↔ mm	↔ mm	kg/piece	⊞	Stock	Unit
-	OVGHV	-				0.010	100		piece

To order per full packaging.

OVGEQ

Earth conductor clamp for flush trunking



Standard finish		Pre-galvanised							
HD	Reference	↑ mm	↔ mm	↔ mm	↔ mm	kg/piece	⊞	Stock	Unit
-	OVGEQ	-				0.020	50		piece

To order per full packaging.

OVGEQH

Earth conductor clamp for flush trunking

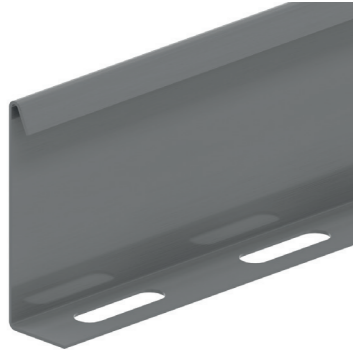


Standard finish		Pre-galvanised							
HD	Reference	↑ mm	↔ mm	↔ mm	↔ mm	kg/piece	⊞	Stock	Unit
-	OVGEQH	-				0.020	50		piece

To order per full packaging.

SLOS

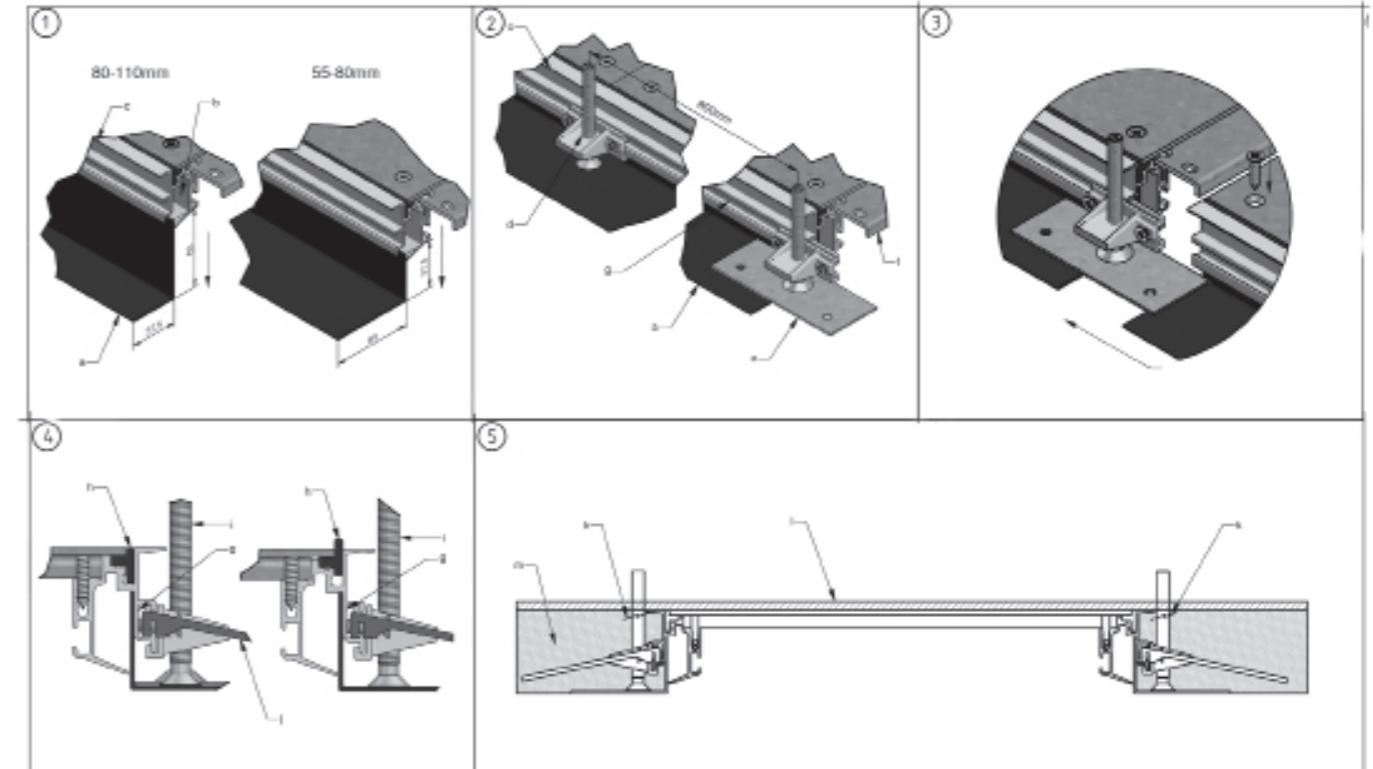
Division plate free



		Standard finish		Pre-galvanised					
		Optional finish HD		Hot-dip galvanised					
HD	Reference	↑ mm	↔ mm	↔ mm	↔ mm	kg/m	⊞	Stock	Unit
HD	SLOS35	35			3000	0.330	150	✓	m
HD	SLOS60	60			3000	0.511	120	✓	m
HD	SLOS85	85			3000	0.680	60	✓	m
HD	SLOS110	110			3000	0.820	30	✓	m

OVG

Technical information



1) Slip the OVGZ (a) into the chamber (b) of the OVGPR (c). A levelling range of 55-80 mm is obtained by placing the OVGZ with its longest side on the ground. A levelling range of 80-110 mm is obtained by placing the OVGZ with its shortest side on the ground.

2) Mount 3 OVGSTs (d) per OVGPR (c). The 2 OVGST provided with a baseplate (e) are mounted at the end where an OVGTR (f) has been placed. These 2 OVGST must be positioned so that they overlap the duct with half of their length. The preassembled baseplates (e) must abut against the OVGZ (a). Mount the other OVGST at intervals of 800 mm. Extra OVGSTs can be easily added by hooking them into the slot provided (g) in the OVGPR.

3) The 2 OVGST which overlap the duct, will be used for coupling with the abutting length.

4) Determine how you will use the OVGTAPE 3 (h): flush mounted or not. Turn levelling screws (i) to the right for levelling up. Turn levelling screws (i) to the left for levelling down. Hook the OVGAN (j) into the slot (g) in the OVGPR. Make sure to seal up any openings with adhesive tape.

5) The system can now be filled with screed (m) and subsequently finished (l).

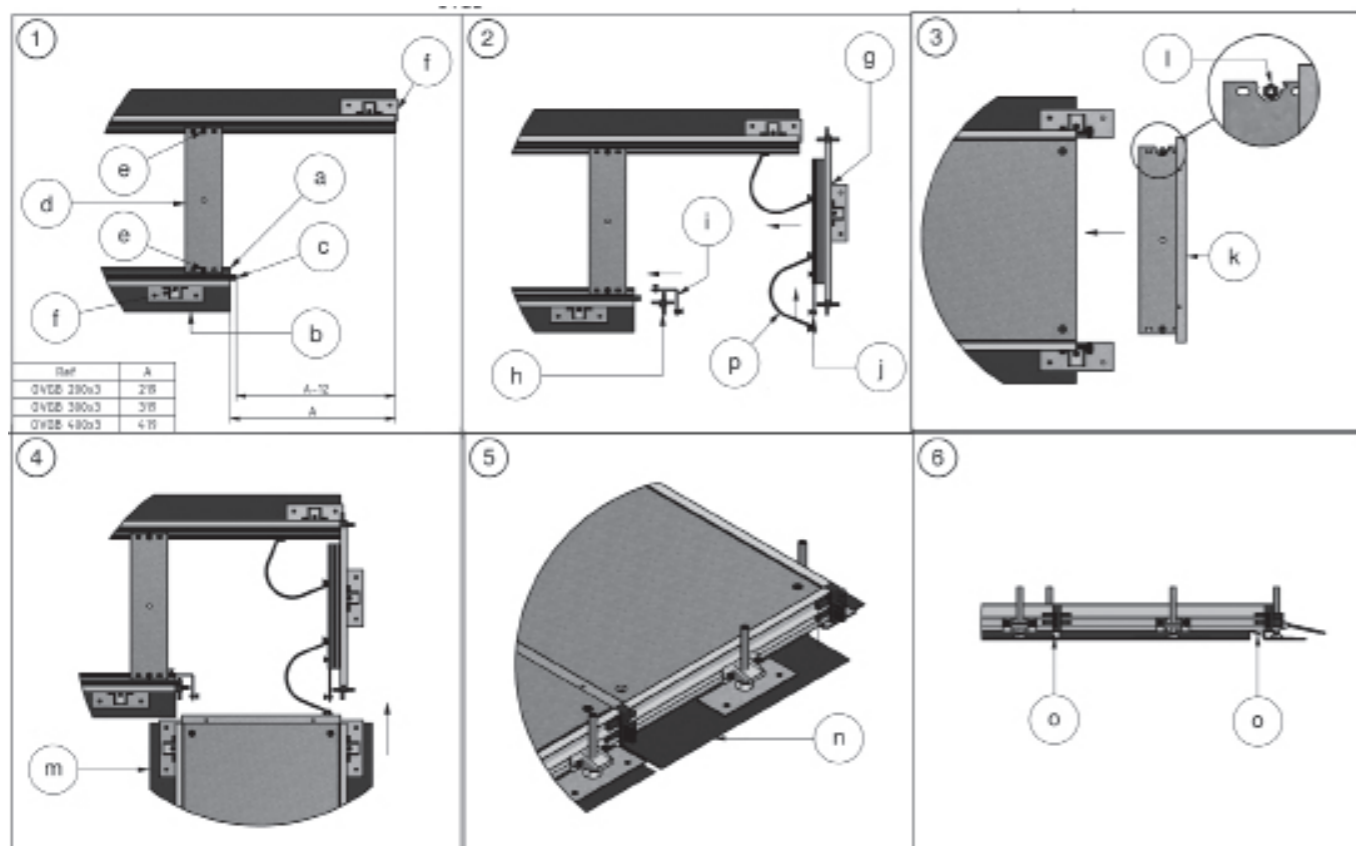
Remark

! To obtain a levelling height of less than 80 mm, shorten the levelling screws to below the top of the aluminium section (k) before pouring the screed (m).

! Note: when laying or removing cables we advise you not to remove the traverses between the aluminium sections.

OVGB

Technical information



1. Remove the length stated in the table from the aluminium profile (a) and the side section (b). Remove a section from the carpet surround that is 12 mm shorter. Move the traverse section (d) of the end section so that it is positioned between the two profiles and fasten with the two screws (e). Reposition the feet (f) as shown in the drawing.

2. Position the earthing strap under corner (i) along with the plastic corner connector (h) in the aluminium profiles of the section which you want to branch off from. Fasten the right earthing clamp (j) the plastic corner connector (h) and the 2 earthing cables (p) in the aluminium profile of the end section. Scovere the end section (g) onto the section you want branch off from and connect 1 earthing cable.

3. Locate the traverse for the supports (k) under the cover of the section from which you are branching off. In order to hold the traverse section at the right level the M6 bolts supplied (l) must be positioned under the most central opening along both sides of the traverse section. Attach the top to the traverse section making use of the most central opening.

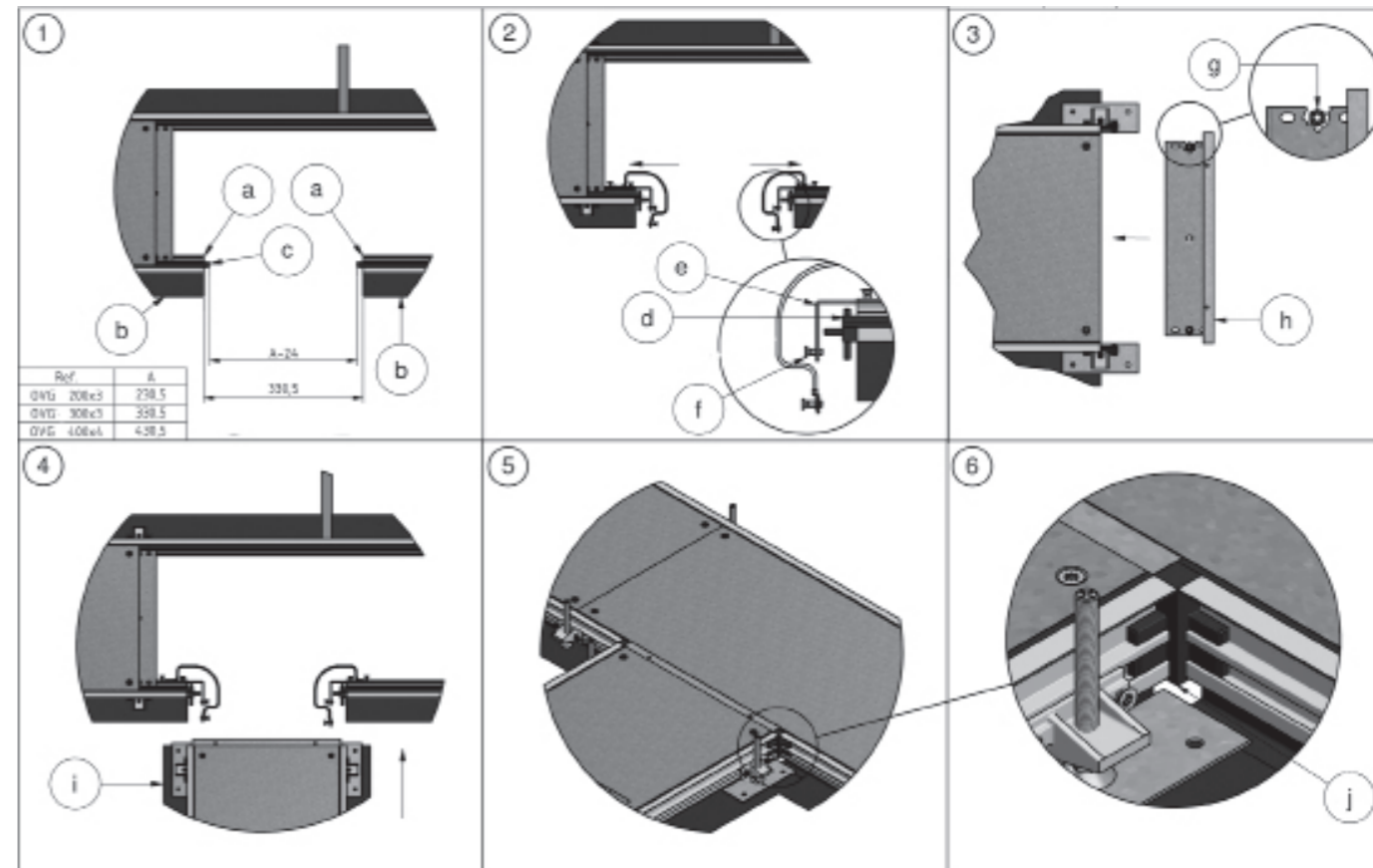
4. Scovere the section you want to branch off from (m) on to the plastic corner connectors that you have attached to the section from which you want to branch off.

5. Cut to size a surplus section of the side (n) so this can be slid into the end section in order to close it off. Line everything up.

6. Seal off all openings (for example o) with adhesive tape.

OVGT

Technical information



1. Remove the length stated in the table from the aluminium profile (a) and the side section (b). Remove a section that is 24mm shorter from the carpet surround (c) so that the edges extend on both sides of the aluminium profile by 12mm.

2. Locate both earthing straps under corner (e) along with the 2 plastic corner connectors (d) in the aluminium profiles of the section from which you want to branch off. Fix in position the earth straps (e) using the M5 screws provided (f).

3. Position the traverse section (h) for the supports under the cover of the sections you want to branch off from. In order to hold the traverse section in the right position you must locate the M6 bolts provided at both sides in the most central hole of the traverse section. Attach the top to the traverse section making use of the most central opening of the traverse section.

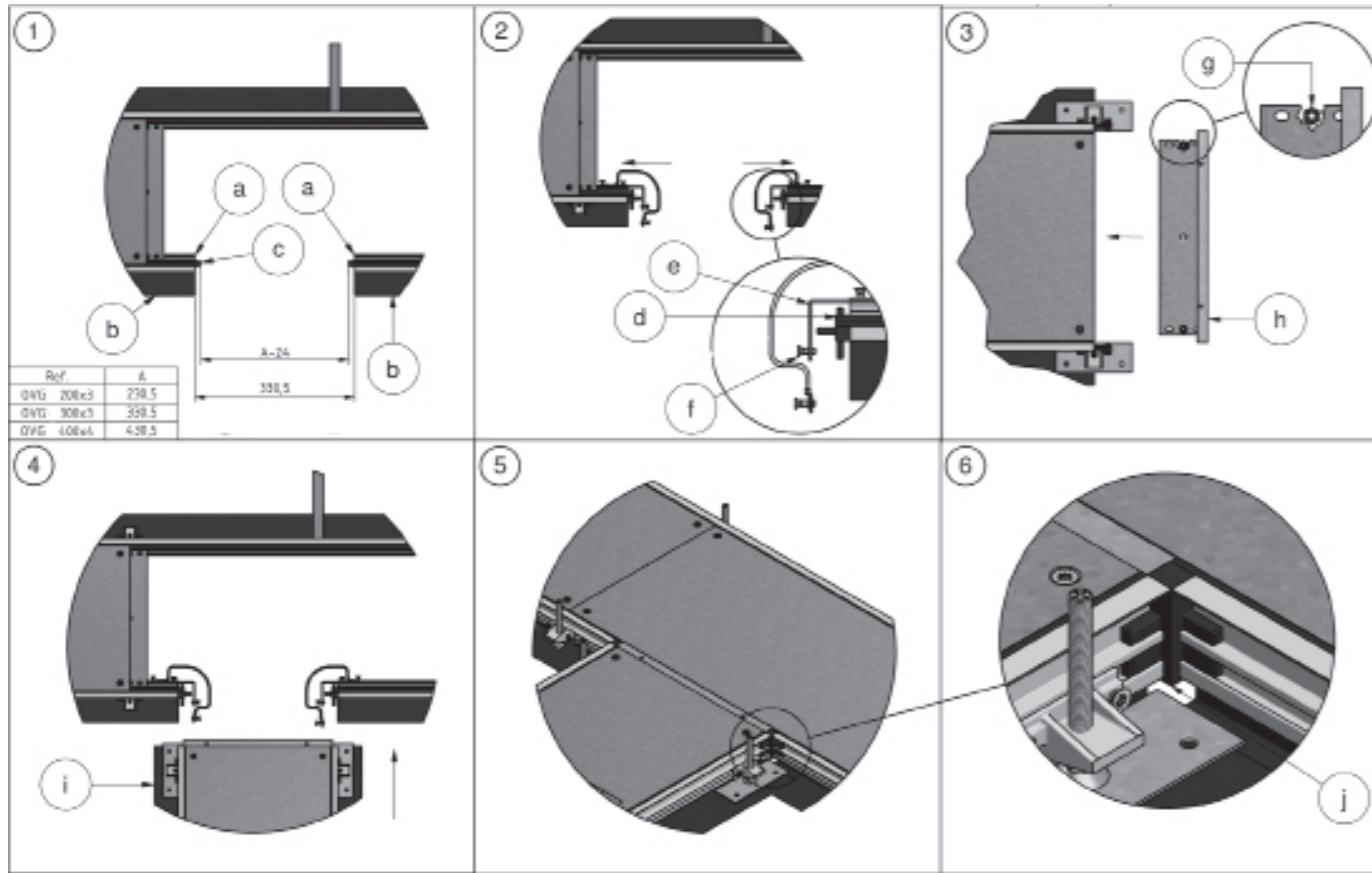
4. Scovere the section which you want to branch off from (i) onto the plastic corner connectors and the earthing straps which you have attached to the section you want to branch off to.

5. Align all components until everything is in line.

6. Close up all openings (for example j) with adhesive tape.

OVGK

Technical information



1. Remove the length stated in the table from the aluminium profile (a) and the side section (b). Remove a section that is 24mm shorter from the carpet surround (c) so that the edges extend on both sides of the aluminium profile by 12mm.

2. Locate both earthing straps under corner (e) along with the 2 plastic corner connectors (d) and the 2 earthing cables (k) in the aluminium profiles of the section from which you want to branch off. Fix in position the earth straps (e) and the 2 earthing cables (k) using the M5 screws provided (f).

3. Position the traverse section (h) for the supports under the cover of the sections you want to branch off from. In order to hold the traverse section in the right position you must locate the M6 bolts provided at both sides in the most central hole of the traverse section. Attach the top to the traverse section making use of the most central opening of the traverse section.

4. Scovere the section which you want to branch off from (i) onto the plastic corner connectors and the earthing straps which you have attached to the section you want to branch off to. Fix the earthing cables (k).

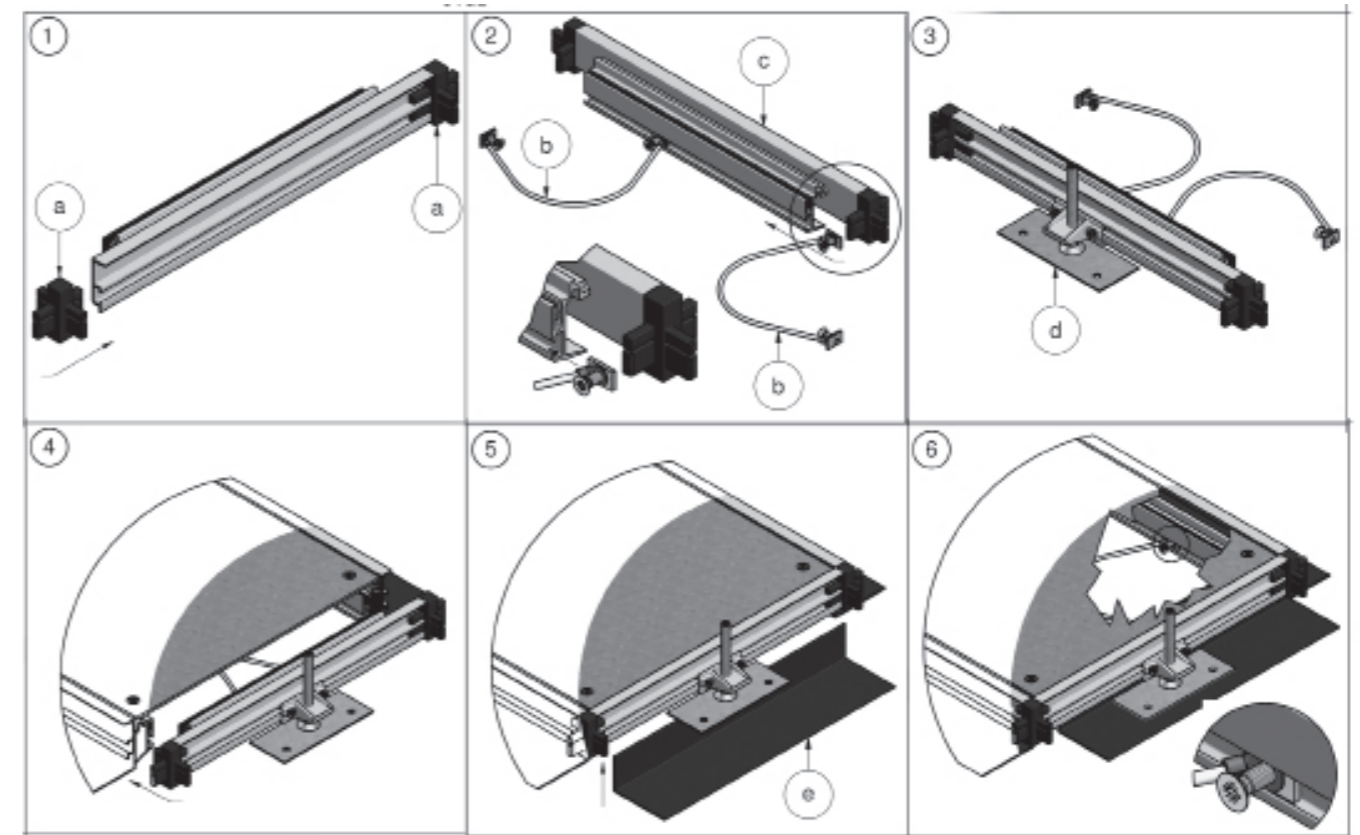
5. Follow steps 1-4 for the other side of the OVG where you want to branch off.

6. Align all components until everything is in line.

7. Close up all openings (for example j) with adhesive tape.

OVGE

Technical information



1. Locate the 2 corner connectors OVGHV (a) in the ends of the profile that is provided with the end section.

2. Attach one end of the earthing straps supplied (b) in the slot provided on the inside of the profile (c).

3. Mount a foot (d) in the middle of the profile of the end section.

4. Scovere the end section into the length of the OVG which you want to close off.

5. Cut a side section (e) to size and attach this under the end section as this is done for the section runs.

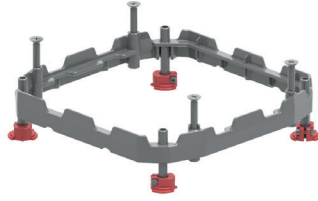
6. Attach the other end of the earthing straps into the aluminium profiles of the section you want to close off.



Accessories

NEOT

Supporting Alu-frame



Universal supporting frame.
Integrated in covers KDVIT, KDVITV3, DRIT3, DVITWD3, DVITWDV3, BDVITWD, KDVITWD3, KDVITWDV3, BDRITWD3, DRITWD3.

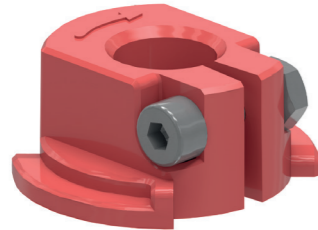
Standard finish		Aluminium								
HD	Reference	↑ mm	↔ mm	↔ mm	↔ mm	kg/piece	📦	Stock	Unit	
-	NEOT2	-				0.750	1		piece	
-	NEOT3	-				0.750	1		piece	

- Set contains:
- Aluminium frame
 - 4 extension nuts AM6.48
 - 4 anchorfeet
 - 4 long bolts M 8x70
 - 4 short bolts M 8x45

Higher leveling range can be achieved per added set of 4 nuts AM6.48.
1 set = 92 - 145 mm.
2 sets = 140 - 193 mm.
3 sets = 188 - 241 mm.
4 sets = 236 - 289 mm.

NEOAVT

Anchor base NEO

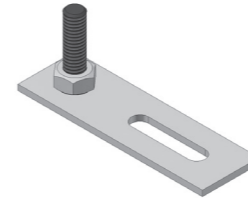


Standard finish		Polypropylene								
HD	Reference	↑ mm	↔ mm	↔ mm	↔ mm	kg/piece	📦	Stock	Unit	
-	NEOAVT	-				0.027	12		piece	

To order per full packaging.

NEOTVT

Support NEOT



Individual leveling foot for the NEOT Alu-rim.
Only to be used with raised floorsystems.

Standard finish		Pre-galvanised								
HD	Reference	↑ mm	↔ mm	↔ mm	↔ mm	kg/piece	📦	Stock	Unit	
-	NEOTVT	-				0.030	4		piece	

The technical information for this product can be found at the end of this chapter.
To order per full packaging.

AM

Extension Nut

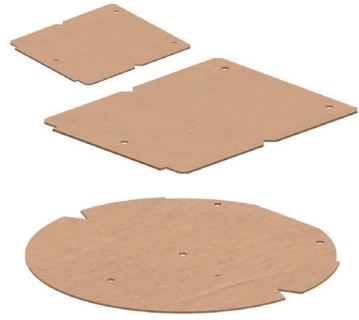


Standard finish		Electro zinc-plated								
HD	Reference	↑ mm	↔ mm	↔ mm	↔ mm	kg/piece	📦	Stock	Unit	
-	AM6.48	48				0.034	12	✓	piece	
-	AM6.96	96				0.067	12	✓	piece	

Can be added to the aluminium frame.
To order per full packaging.

OHE

Packer floorcover



Packers can be added to level the floor finish in the covers.

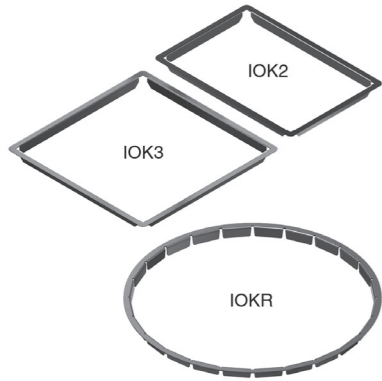
Standard finish		Cardboard								
HD	Reference	↑ mm	↔ mm	↔ mm	↔ mm	kg/piece	📦	Stock	Unit	
-	OHEV2.2	-				0.045	1		piece	
-	OHEV2.5	-				0.200	1		piece	
-	OHEV3.2	-				0.060	1		piece	
-	OHEV3.5	-				0.250	1		piece	
-	OHER3.2	-				0.060	1		piece	
-	OHER3.5	-				0.250	1		piece	
-	OHEVB2.2	-				0.070	1		piece	
-	OHEVB2.5	-				0.174	1		piece	
-	OHEVB3.2	-				0.098	1		piece	
-	OHEVB3.5	-				0.244	1		piece	

- For 3 compartment square covers:
- OHEV3.2 and OHEV3.5
- For 2 compartment rectangular covers:
- OHEV2.2 and OHEV2.5
- For 3 compartment round covers:
- OHER3.2 and OHER3.5
- For blind cover square:
- OHEVB3.2 and OHEVB3.5
- For blind cover rectangular:
- OHEVB2.2 and OHEVB2.5

Only for spaces with dry floor treatment.

IOK

Filler rim for covers



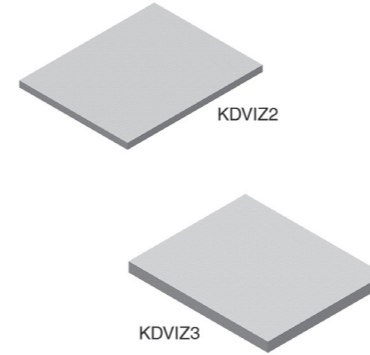
Standard finish		Stainless Steel 304								
HD	Reference	↑ mm	↔ mm	↔ mm	↔ mm	kg/piece	📦	Stock	Unit	
-	IOK2	16	213		288	0.179	4		piece	
-	IOK3	16	288		288	0.198	4		piece	
-	IOKR	16	347		347	0.294	4		piece	

Stainless filler rim is advised to be used for oversized floor cut-outs between 272 and 275 mm (square and rectangular), between 197 and 200 mm (rectangular) and between diameter 332 and 335 mm (round).

- IOK2: Filler rim for covers BDVKK2, KDVKK2
- IOK3: Filler rim for covers BDVKK3, KDVKK3
- IOKR: Filler rim for covers BDRKK3, KDRKK3

KDVIZ

Kit for heavy load



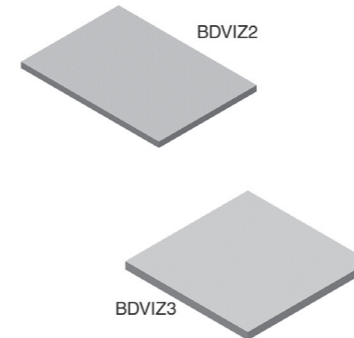
Max. load		1,5 tons								
Standard finish		Polyvinyl chloride								
HD	Reference	↑ mm	↔ mm	↔ mm	↔ mm	kg/piece	📦	Stock	Unit	
-	KDVIZ2	-	182	10.00	227	0.537	1	✓	piece	
-	KDVIZ3	-	227	15.00	257	1.138	1	✓	piece	

Tested according EN 50085-2-2.

- KDVIZ2 for KDVIT2 and KDVIRK2.
- KDVIZ3 for KDVIT3 and KDVIRK3.

BDVIZ

Kit for heavy load



Max. load		1,5 tons								
Standard finish		Polyvinyl chloride								
HD	Reference	↑ mm	↔ mm	↔ mm	↔ mm	kg/piece	📦	Stock	Unit	
-	BDVIZ2	-	182	10.00	257	0.608	1	✓	piece	
-	BDVIZ3	-	257	20.00	257	1.717	1	✓	piece	

Tested according EN 50085-2-2.

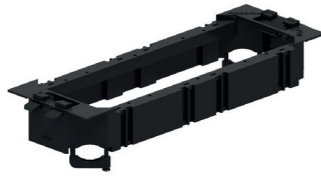
- BDVIZ2 for BDVITWD2.
- BDVIZ3 for BDVITWD3.

TSBU

Apparatus cup universal

Clippable system.

Color	Black RAL 9011
Standard finish	Polypropylene



HD	Reference	↑ mm	↔ mm	↔ mm	↔ mm	kg/piece	⊞	Stock	Unit
-	TSBU	-				0.090	12	✓	piece

To order per full packaging.
Tested to EN 50085-2-2.

Can be clipped and fixed in the cover frame at different heights.

Set containing:
- 2 screw-in cable restrainers

A bottom cover plate type ADPUB and cover plates ADPU, according to desired connections, can be added.
2 x 71mm module application is possible with 2 x APDU1.50.50. For use of 3 x 71mm module, please contact Vergokan.
Break away the extreme corners for mounting.

TSBU45

Apparatus cup 45

Clippable system.

Color	Black RAL 9011
Standard finish	Polypropylene



HD	Reference	↑ mm	↔ mm	↔ mm	↔ mm	kg/piece	⊞	Stock	Unit
-	TSBU4.45.45	-				0.110	12	✓	piece

To order per full packaging.
Tested to EN 50085-2-2.

For 4 clip devices type 45x45.
Can be clipped and fixed in the cover frame at different heights.

Set containing:
- Base cup
- Cover plate ADPU4.45.45
- 2 screw-in cable restrainers
- Divider SSBU

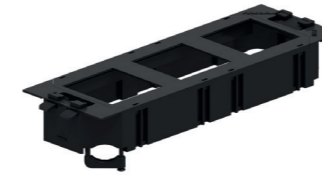
A bottom cover plate, type ADPUB, can be added.
Break away the extreme corners for mounting.

TSBU50

Apparatus cup 50

Clippable system.

Color	Black RAL 9011
Standard finish	Polypropylene



HD	Reference	↑ mm	↔ mm	↔ mm	↔ mm	kg/piece	⊞	Stock	Unit
-	TSBU3.50.50	-				0.100	12	✓	piece

To order per full packaging.
Tested to EN 50085-2-2.

For 3 clip devices type 50x50.
2 x 71mm module application is possible with 2 x APDU1.50.50. For use of 3 x 71mm module, please contact Vergokan
Can be clipped and fixed in the cover frame at different heights.

Set containing:
- Base cup
- Cover plate ADPU3.50.50
- 2 screw-in cable restrainers

A bottom cover plate, type ADPUB, can be added.
Break away the extreme corners for mounting.

TSBUD

Apparatus cup angular

Clippable system.

Color	Black RAL 9011
Standard finish	Polypropylene



HD	Reference	↑ mm	↔ mm	↔ mm	↔ mm	kg/piece	⊞	Stock	Unit
-	TSBUD3.36ANGLE	-				0.120	12	✓	piece

To order per full packaging.
Tested to EN 50085-2-2.

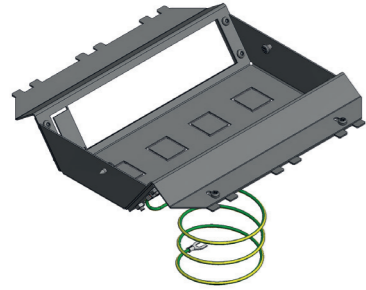
Can be clipped and fixed in the cover frame at different heights.

Set containing:
- Base cup
- Cover plate ADPUD3.36ANGLE

A bottom cover plate type ADPUB and 3 dataplates type IDP, can be added.
Break away the extreme corners for mounting.

TSB3

Triple apparatus cup



For compact floor installations. Ideal for lower installation depths from 100mm. For lower installation depths use TSBL3.

Standard finish.		Pre-galvanised									
HD	Reference	mm	mm	mm	mm	kg/piece	Stock	Unit			
-	TSB3	-	-	-	-	0.688	5	✓	piece		

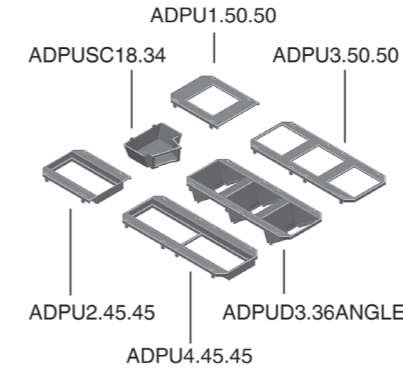
Tested according EN 50085-2-2.

For oblique mounting of clip devices 45.

- Standard 8 mounting positions.
- After removing the rectangular plate, max. 9 mounting positions.
- After removing 4 plates (push and turn away), Attema network port adapters can be mounted in the bottom.
- Fasten by tightening 2 pre-assembled screws with Pozi2 screwdriver.
- Earthing wire is included and can be connected to NEO floor box.

ADPU

Coverplate for TSBU



Color	Black RAL 9011
Standard finish	Polycarbonate

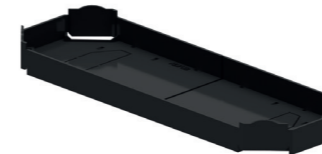
HD	Reference	mm	mm	mm	mm	kg/piece	Stock	Unit
-	ADPU1.50.50	-	-	-	-	0.010	12	✓ piece
-	ADPU2.45.45	-	-	-	-	0.010	12	✓ piece
-	ADPU3.50.50	-	-	-	-	0.010	12	✓ piece
-	ADPU4.45.45	-	-	-	-	0.020	12	✓ piece
-	ADPUD3.36ANGLE	-	-	-	-	0.010	12	✓ piece
-	ADPUSC18.34	-	-	-	-	0.012	12	✓ piece

To order per full packaging.
Tested to EN 50085-2-2.

- ADPU1.50.50 for 1 screw-in module 50x50.
- ADPU3.50.50: For use of 3 x 71 mm module, please contact Vergokan.
- ADPU2.45.45 for 2 clip devices type 45x45.
- ADPU4.45.45 for 4 clip devices type 45x45.
- ADPUSC18.34 for quick connection. clippable to bottom cover plate ADPUB.
- ADPU1.50.50 and ADPU3.50.50: unused positions can be filled with blind caps, type ADSU50.50.
- ADPU2.45.45 and ADPU4.45.45: unused positions can be filled with blind caps, type ADSU45.45.

ADPUB

Baseplate for TSBU



To seal the open side of TSBU in high-voltage applications.

Color	Black RAL 9011
Standard finish	Polypropylene

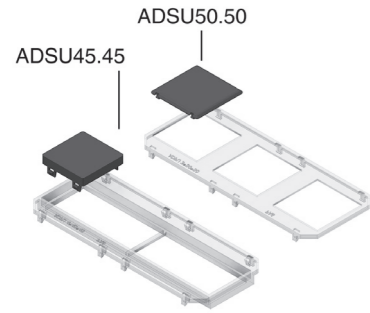
HD	Reference	mm	mm	mm	mm	kg/piece	Stock	Unit
-	ADPUB	-	-	-	-	0.035	24	✓ piece

To order per full packaging.
Tested to EN 50085-2-2.

- Provided with:
- Snap-off corners for cable exit.
 - A removable section for use with quick connector (in combination with ADPUSC18.34).
- Scored for easy separation.

ADSU

Cap



Color	Black RAL 9011
Standard finish	Polypropylene

HD	Reference	↑ mm	↔ mm	↔ mm	↔ mm	kg/piece	⊞	Stock	Unit
-	ADSU45.45	-	45		45	0.010	12	✓	piece
-	ADSU50.50	-	50		50	0.010	12	✓	piece

To order per 12 pieces.
Tested to EN 50085-2-2.

- ADSU45.45: for covering unused positions in ADPU2.45.45, ADPU4.45.45, TSBL3 et TSBL2.
- ADSU50.50: for covering unused positions in ADPU1.50.50 and ADPU3.50.50.
- Simple mounting and removing or re-positioning of new modules.
- Efficient protection of spare plates.

SSBU

Divider plate TSBU



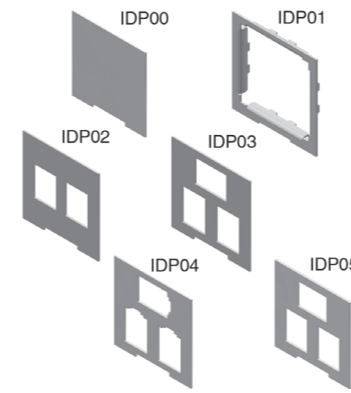
Color	Black RAL 9011
Standard finish	Polypropylene

HD	Reference	↑ mm	↔ mm	↔ mm	↔ mm	kg/piece	⊞	Stock	Unit
-	SSBU	-				0.010	12	✓	piece

To order per full packaging.
Tested to EN 50085-2-2.

IDP

Fixing plate ADPUD



Color	Black RAL 9011
Standard finish	Electro zinc-plated

HD	Reference	↑ mm	↔ mm	↔ mm	↔ mm	kg/piece	⊞	Stock	Unit
-	IDP00	-				0.020	6	✓	piece
-	IDP01	-				0.020	6	✓	piece
-	IDP02	-				0.020	6	✓	piece
-	IDP03	-				0.020	6	✓	piece
-	IDP04	-				0.020	6	✓	piece
-	IDP05	-				0.020	6	✓	piece

To order per 6 pieces.
Tested to EN 50085-2-2.

- IDP00: Blind plate
- IDP01: for 45 x 45 mm
- IDP02: for 2x 14,8 x 19,4 mm
- IDP03: for 3x 14,7 x 20,1 mm
- IDP04: for 3x RJ45
- IDP05: for 3x 14,6 x 19,3 mm

GBP

Blind plate



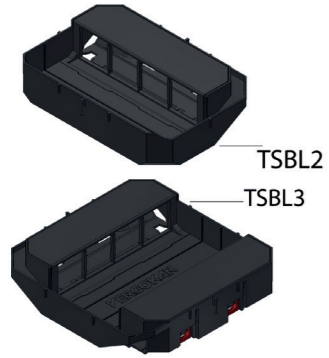
Color	grey RAL 7011
Standard finish	Polypropylene

HD	Reference	↑ mm	↔ mm	↔ mm	↔ mm	kg/piece	⊞	Stock	Unit
-	GBP	-				0.030	12	✓	piece

To order per full packaging.
Tested according EN 50085-2-2.

TSBL

Low profile apparatus box



Completely clippable.

Color	Black RAL 9011
Standard finish	Polypropylene

HD	Reference	↑ mm	↔ mm	↔ mm	↔ mm	kg/piece	⊞	Stock	Unit
-	TSBL2	-	-	-	-	0.210	6	✓	piece
-	TSBL3	-	-	-	-	0.275	3	✓	piece

The technical information for this product can be found at the end of this chapter.

To order per full packaging.
Tested to EN 50085-2-2.

For oblique mounting of clip devices type 45.

TSBL2:

Up to 4 mounting positons.

Set contains base cup + 1 frame + 2 screw-in cable restrainers.

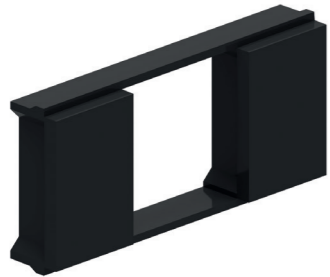
TSBL3:

Up to 8 mounting positons.

Set contains base cup + 2 frames + 4 screw-in cable restrainers.

ASTSBL

Adapter piece low profile apparatus box



Adapter piece for angle arrangement

Standard finish	Polypropylene
-----------------	---------------

HD	Reference	↑ mm	↔ mm	↔ mm	↔ mm	kg/piece	⊞	Stock	Unit
-	ASTSBL	-	-	-	-	0.013	6	✓	piece

To order per full packaging.

Adapter for the mounting of 3 single sockets in the TSBL that are used with right angled plugs.

MK

Silicon box



HD	Reference	↑ mm	↔ mm	↔ mm	↔ mm	kg/piece	⊞	Stock	Unit
-	MK	-	-	-	-	0.520	1	✓	piece

OV

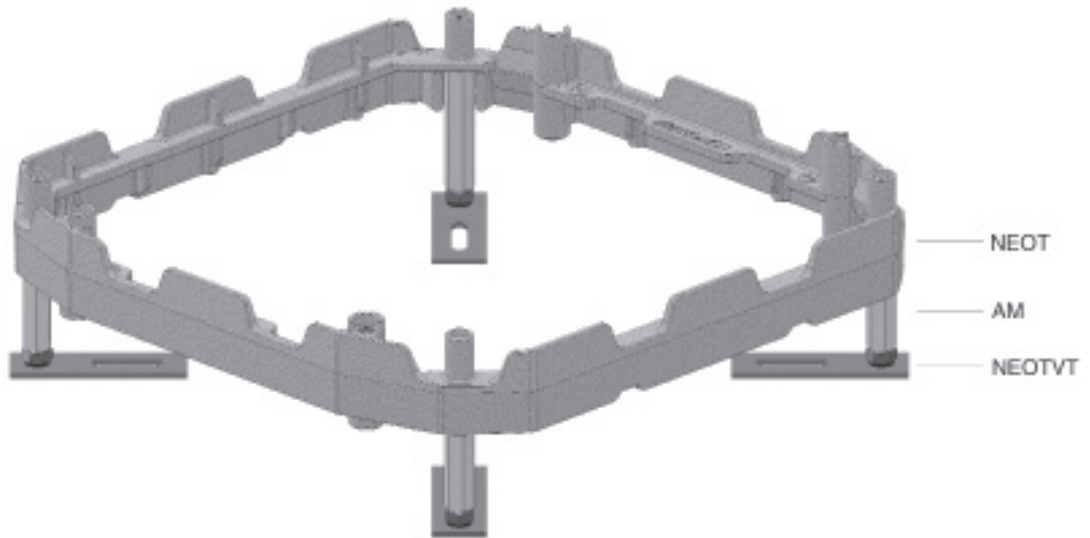
Degreaser



HD	Reference	↑ mm	↔ mm	↔ mm	↔ mm	kg/piece	⊞	Stock	Unit
-	OV	-	-	-	-	0.400	1	✓	piece

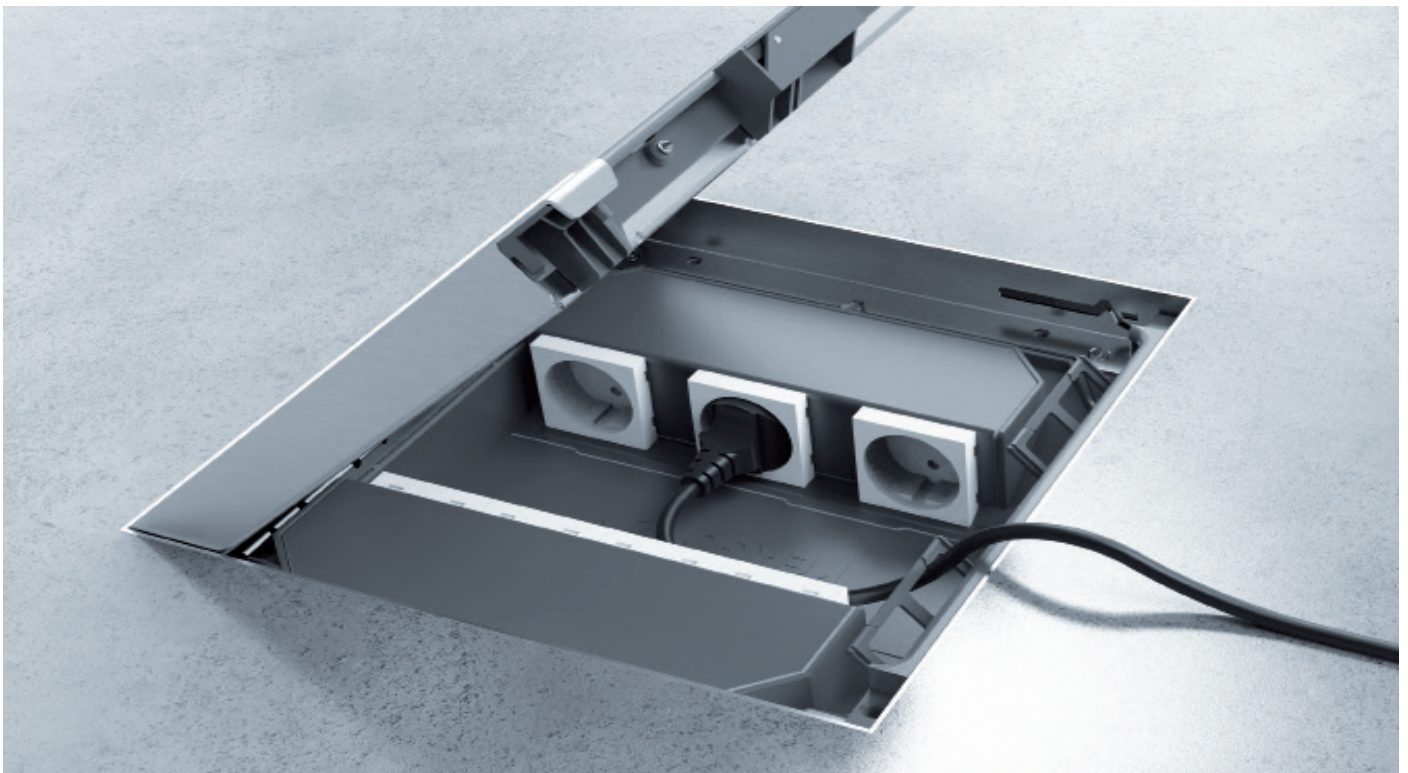
NEOTVT

Technical information



TSBL

Technical information





Allied Tube & Conduit ▲ AFC Cable Systems ▲ Heritage Plastics ▲ Unistrut
Unistrut Construction ▲ Cope ▲ US Tray ▲ Calbrite ▲ Calbond ▲ Kaf-Tech
Columbia-MBF ▲ Eastern Wire + Conduit ▲ ACS/Uni-Fab ▲ Cii
Power-Strut ▲ Calconduit ▲ Razor Ribbon ▲ Calpipe Security
Vergokan ▲ Flexicon ▲ Marco



www.atkore.com/vergokan 

©2020 Atkore International, Inc. All rights reserved. Floor installations_v2